

# *Guide to* **Local Food & Farms** *2023*

FARMERS MARKETS • FARM STORES • FARMS • RESTAURANTS

berkshire  
GROWN





## KEEP FARMERS FARMING!

**Local, prosperous, and diverse farms are essential to the economic health and environmental quality of the Berkshires**

Berkshire Grown's food access programs — Share the Bounty and Farm to Food Access — put money directly into farmers' pockets and put locally grown food on the tables of families facing food insecurity.

Berkshire Grown Winter Farmers Markets extend the selling season for farmers and increase community access to local food year-round.

Berkshire Grown farmer workshops, 1:1 technical assistance, and farmer peer mentoring help farmers grow their business and stay connected.

## BECOME A MEMBER TODAY!

As a contributor to Berkshire Grown, you support local farmers and promote locally grown food, strengthen the local economy, feed hungry neighbors, and preserve open space.



**SCAN TO BECOME  
A MEMBER TODAY!**



# Welcome to the 2023 Berkshire Grown Guide to Local Food & Farms

PHOTO: ALLISON SHEEHY



With all the ups and downs in our lives and in the world, the hard work of our local Berkshire farmers keeps us grounded, fed, connected. Each time you buy directly from a local farmer, not only do you eat the freshest, most delicious food and farm products, you also support local agriculture as a vital part of the Berkshire community.

This 2023 Guide to Local Food and Farms is the region's most comprehensive guide to local farms, farmers markets, and restaurants offering local foods — use it to find farm stands, CSA farms, pick-your-own farms and orchards, as well as local value-added products like charcuterie, preserves, and fermented foods. Within these pages and online at [BerkshireGrown.org/Find-Food-and-Farms](https://BerkshireGrown.org/Find-Food-and-Farms), you will find descriptions and locations of local farms and food purveyors. Or use the QR codes in the Guide to find our interactive map to local farms and food sites, and a complete listing of locations and hours of food pantries spread across the county.

Keep this Guide to Local Food and Farms handy and use it frequently! And remember — buy fresh and buy local to Keep Farmers Farming!

## **Margaret Moulton**

*Executive Director, Berkshire Grown*

We acknowledge that we work and live on the traditional land of the Muh-he-con-ne-ok (Mohican) peoples, past and present. In spite of the tremendous hardship of being forced from this homeland, today their community thrives in Wisconsin and is known as the Stockbridge-Munsee Community. We honor with gratitude the land itself and the people who have stewarded it throughout generations. We commit to continuing to learn how to be better stewards of the land we inhabit and to building a more inclusive and equitable space for all.

## TABLE OF CONTENTS

4	Farmers Markets
6	Farms & Growers
18	Farm Stores
20	Food & Lodging
22	Community Food Pantries
24	Specialty Producers
25	Additional Members
32	Membership

# Farmers Markets



Maynard Farms & Orchards, Ulster Park, NY (right)



- FC** Fresh Connect
- HIP** Healthy Incentives Program
- SF** Senior Farmers Market Nutrition Program
- SNAP** Supplemental Nutrition Assistance Program
- WIC** Supplemental Nutrition Program for Women, Infants & Children



Look for markets with the Market Match logo to boost your buying power with SNAP/EBT and HIP benefits

**WILLIAMSTOWN, MA**  
**Williamstown Farmers Market**  
**HIP SNAP WIC SF**  
[williamstownfarmersmarket.org](http://williamstownfarmersmarket.org)  
 On Facebook  
 Parking lot at base of Spring St.  
 Sat 9am – 1pm, May 13 – Oct 21  
 Local produce, flowers and crafts.



**WILLIAMSTOWN, MA**  
**Berkshire Grown Winter Farmers Market**  
**HIP SNAP**  
[berkshiregrown.org](http://berkshiregrown.org)  
 Once monthly, Nov & Dec,  
 Sundays 10am – 2pm  
 Check website in Sept. for dates and location: [berkshiregrown.org](http://berkshiregrown.org)  
 Local produce and food products, cider, cheese, meat and more.



**LENOX, MA** **SNAP**  
**Lenox Farmers Market**  
**(Lenox Chamber of Commerce)**  
[lenox.org/lenox-farmers-market/](http://lenox.org/lenox-farmers-market/)  
 80 Church St.  
 Fri 11am – 3pm, May 26 – Sept 15  
 Fresh produce, breads, sweets, artisanal & specialty foods, and crafts.

**NEW LEBANON, NY**  
**New Lebanon Farmers Market**  
**FC HIP SF SNAP WIC**  
[newlebanonfarmersmarket.com](http://newlebanonfarmersmarket.com)  
 516 US/NY State Rte 20  
 Sun 10am – 2pm, June 4 – Oct 29,  
 Year-round Indoor Market:  
 Daily, 11am – 6pm, Fisher's Store  
 528 US/NY State Rte 20  
 Pre-order markets with pickup or delivery through website. Locally grown and produced food, goods, art, and entertainment.



**PITTSFIELD, MA**  
**Pittsfield Farmers Market**  
**HIP SF SNAP WIC**  
[farmersmarketpittsfield.org](http://farmersmarketpittsfield.org)  
 Accepts credit/debit  
 Sat 9am – 1pm, May 13 – October 14,  
 The Common, 100 First St.  
 Winter Indoor:  
 2nd Sat Nov – April, 9am – 1pm,  
 Zion Lutheran Church, 74 First St.  
 Powered by Roots Rising, the teen-run Pittsfield Farmers.  
 Market is a year-round offering local fruit, vegetables, meat, cheese, baked goods, flowers, honey, maple syrup, pickles and preserves, artisan goods and more!



## NORTH COUNTY

**BENNINGTON, VT**  
**Bennington Farmers Market** **SNAP**  
[benningtonfarmersmarket.org](http://benningtonfarmersmarket.org)  
 100 Veterans Memorial Dr.  
 Sat 10am – 1pm, May 6 – Oct 21  
 Winter Indoor Markets: Dates and location TBD. Please check website.  
 Local produce, cheese, meat, baked goods, and crafts

**NORTH ADAMS, MA**  
**North Adams Farmers Market**  
**HIP SF SNAP WIC**  
 On Facebook  
 St. Elizabeth's parking lot on St. Anthony Dr. & Marshall St.  
 Summer: Sat 9am – 1pm, June 3 – Oct 21  
 Winter Indoor: 1st Sat monthly, 9am – 1pm,  
 Nov – May at 85 Main St., Suite 105  
 Local produce and more.



## CENTRAL COUNTY

**LANESBOROUGH, MA**  
**Berkshire Area Farmers Market**  
 On Facebook  
 Berkshire Mall parking lot,  
 Old State Rd., and Rte 8  
 Sat 8am – 2pm, May 6 – Nov 18  
 Vegetables, fruit, plants, meat & more.

**LEE, MA**  
**Lee Farmers Market**  
**HIP SNAP**  
[leefarmersmarket.com](http://leefarmersmarket.com)  
 25 Park Place, at the town park intersections of Main St., Housatonic St. & West Park St. in front of the First Congregational Church.  
 Held rain or shine!  
 Sat 10am – 2pm, May 27 – Oct 7  
 Local produce and crafts.





**WEST STOCKBRIDGE, MA**  
**West Stockbridge Farmers Market**  
**SF SNAP WIC**

[weststockbridgefarmersmarket.org](http://weststockbridgefarmersmarket.org)

The Foundry Green on Harris St.

Thurs 3 – 6 pm, May 25 – Oct 5

Offering a wide variety of fresh fruit and vegetables, artisanal cheeses, eggs, organic meat, local maple syrup, jams, soaps, fresh flowers, bread, baked goods and more.



## SOUTH COUNTY

**CORNWALL, CT**  
**The Original Cornwall Farmers Market**

[cornwallfarmmarket.org](http://cornwallfarmmarket.org)

413 Sharon Goshen Turnpike,  
 West Cornwall

Sat 10am – 1pm, June – Oct

Locally grown, raised & artisanal handcrafted food, flowers, edible & ornamental plants.

**GREAT BARRINGTON, MA**  
**Great Barrington Farmers Market**  
**HIP SF SNAP WIC**

[greatbarringtonfarmersmarket.org](http://greatbarringtonfarmersmarket.org)

18 Church St.

Sat 9am – 1pm, May 13 – Nov 11

A local farmer-run market featuring fresh local produce and food.



**GREAT BARRINGTON, MA**  
**Berkshire Grown Winter Farmers Market**  
**HIP SNAP**

[berkshiregrown.org](http://berkshiregrown.org)

Winter indoor markets once monthly,

Sat 10am – 2pm, Nov – April

Check website in Sept. for dates and location.



**HILLSDALE, NY**  
**Copake Hillsdale Farmers Market**  
**SNAP**

[copakehillsdalefarmersmarket.com](http://copakehillsdalefarmersmarket.com)

Roeliff Jansen (Roe Jan) Park,  
 9140 Rte. 22

1/2 mile south of Rte. 23, Hillsdale

Sat 9am – 1pm, May 20 – Nov 18

Organic vegetables, fruits, locally raised meats, charcuterie, specialty products, prepared food, cheese, bread, baked goods, eggs, jams/jellies, honey, maple syrup. Live music and children's programming. CSA pickup.



**MILLERTON, NY**  
**Millerton Farmers Market**  
**SNAP**

[neccmillerton.org/farmers-market](http://neccmillerton.org/farmers-market)

Millerton Methodist Church lawn,  
 6 Dutchess Ave.

Sat 10am – 2pm, May 20 – Oct 28

Winter Season:

Sat 10am – 2pm, Nov 4 – Dec 30, 2023

then 2nd & 4th Sat 10am – 2pm,

Jan 13 – April 27, 2024

The Millerton Farmers Market, managed by the North East Community Center, offers a wide variety of seasonal organic produce, pasture-raised meats, fruit, cheeses, baked goods and prepared foods. All of our vendors are local and use sustainable and ethical growing practices.



**NEW MARLBOROUGH, MA**  
**New Marlborough Farmers Market**

[On Facebook](#)

Village Green, 134 Hartsville-New Marlboro Rd.

Sat 10am – 1pm, May 27 – Sept 2

Produce, eggs, honey, cut flowers, succulents, maple syrup, pickles, jellies & jams, baked treats, soaps and more. Hand-crafted items by local artisans.

**NORFOLK, CT**  
**Norfolk Farmers Market**

[norfolkfarmersmarket.org](http://norfolkfarmersmarket.org)

Town Hall, 19 Maple Ave.

One block north of Rte. 44

Sat 10am – 1pm, June 3 – Sept 2

Locally grown fruits and vegetables, grass-fed meats, herbs, cheeses, breads, cookies, tarts and pies, honey, maple syrup, jams and pickles, finely crafted artisan wares. Live music every week.

**OTIS, MA**  
**Otis Farmers Market**

[otisfarmersmarket.com](http://otisfarmersmarket.com)

2000 East Otis Rd.

Sat 9am – 1pm, May 27 – Oct 7

Produce, eggs, baked goods, meat, crafts and more.



**SHEFFIELD, MA**  
**Sheffield Farmers Market**  
**HIP SNAP**

[sheffieldfarmersmarket.org](http://sheffieldfarmersmarket.org)

Old Parish Church parking lot, 125 Main St.

Summer Outdoor: Fri 3 – 6pm, May 26 – Oct 6

Winter Indoor: 2nd Sat Nov – March, 10am – 1pm

Dewey Memorial Hall, 91 Main St.

Vibrant marketplace featuring local farmers, food producers, artisans & musicians, promoting local business, healthy eating.

# Berkshire MOBILE FARMERS MARKET

COMING THIS FALL TO  
 BERKSHIRE COUNTY!

Bringing 100%  
 locally-sourced food  
 to low-access areas  
 of Berkshire County  
 thanks to the USDA  
 Regional Food System  
 Partnership Grant.



SCAN FOR MARKET DATES, DAYS, TIMES, AND LOCATIONS

Visit [berkshiregrown.org/berkshire-farmers-markets](http://berkshiregrown.org/berkshire-farmers-markets) for updates throughout the year.

# Farms & Growers



Graylight Farm, Hillsdale, NY

- CSA** Community Supported Agriculture (Farm Shares)
- FS** Farm Store
- HIP** Healthy Incentives Program
- PYO** Pick Your Own
- SNAP** Supplemental Nutrition Assistance Program
- WIC** Supplemental Nutrition Program for Women, Infants & Children

## NORTH COUNTY

### 328North CSA

[328north.com](http://328north.com)

Tu Le

328 North St.

Williamstown, MA 01267

Farm + Flower + Food. Creative micro farm focused on specialty vegetables, fruit, flowers. Flower CSA. A focus on hand scale, sustainable practices. Studio @greylockWORKS, 508 State Rd. North Adams, MA. See our farm grown and made products.

### Ashford Heights Farm

[ashfordheightsfarm.com](http://ashfordheightsfarm.com)

On Facebook and Instagram

Teresa Dagnault

413 743-0079

Pasture raised, grass fed lamb. Wool products including roving, yarn, hand knit items, handwoven items and pelts. Breeding and fiber flock animals available. Vending at North Adams Farmers Market the first Saturday each month May – October 2023.

### Ayrhill Farms FS

On Facebook

Jason Hoellerich

45 Henry Wood Rd.

Cheshire, MA 01225

413 743-1474

Wholesale beef cattle. Maple Syrup.

### Berle Farm FS CSA

[berlefarm.com](http://berlefarm.com)

#berlefarm

319 Beechwood Rd.

Hoosick NY 12090

518 686-3249

Store hours: 10 – 5 Thurs, Fri, Sat and 10 – 2 on Sun. April 15 – 18. Certified Organic Vegetables, Cheese, yogurt, milk, fruit, flowers and Angus beef grown at Berle Farm plus specialties from nearby farms and businesses. We ship cheese for holidays.

### Bigfoot Farm SNAP

[bigfootlikesfarming.com](http://bigfootlikesfarming.com)

Brian Cole

At the Williamstown Farmers Market with a variety of vegetables and cut flowers. We believe in protecting the ecosystem of the farm – no herbicides, pesticides, or tractors.

### Black Bear Farm

Jaan & Jacqueline Metsma

20 Bog Pond Rd., Savoy, MA 01256

413 743-2101

Seasonal produce, fruits, and berries, including red and black currants.

### Blair Farm

Donald & John Quimby

2138 Hancock Rd.

Williamstown, MA 01267

413 458-5402

Sweet corn, tomatoes, other seasonal vegetables, and eggs. Bedding plants, and annuals. At Williamstown Farmers Market.

### Caretaker Farm

CSA HIP SNAP

[caretakerfarm.org](http://caretakerfarm.org)

Don Zasada & Bridget Spann

1210 Hancock Rd.

Williamstown, MA 01267

413 458-9691

Free choice CSA – choose your favorite vegetables and fruits on the farm rather than picking up a box. Also meat, eggs, bread.

### Colonial Alpacas FS

[colonialalpacas.com](http://colonialalpacas.com)

Dell & Susan Rodman

341 Luce Rd.

Williamstown, MA 01267

413 597-1604

Alpaca farm visits plus shopping at our farm store year-around (Fridays, Saturdays & Sundays from 11 am – 4 pm). Call to arrange a visit and shop on days that we are closed.

### Cricket Creek Farm FS

[cricketcreekfarm.com](http://cricketcreekfarm.com)

Topher Sabot

1255 Oblong Rd.

Williamstown, MA 01267

413 458-5888

Grass-fed raw milk, artisanal farmstead cheese, grass-fed beef & veal, and whey-fed pork. Farm & farm store are open to the public every day. Visitors are welcome!

### East Mountain Farm FS SNAP

[eastmountainfarm.com](http://eastmountainfarm.com)

Kim Wells

582 Henderson Rd.

Williamstown, MA 01267

413 281-7291

Pastured beef, pork & chicken. Small square hay bales. Meat sold by the cut at the farm year-round during daylight hours and at Williamstown Farmers Market. Also sold by the side, whole or split-side. Call or stop by.



**Elderberry Springs FS**[elderberrysprings.com](http://elderberrysprings.com)

Kathleen Longhi & Joe McGrath  
806 Taconic Trail, Petersburg, NY 12138  
518 659-1411

Traditional & sugar free Elderberry syrup, dried Elderflowers, dried Elderberries, Elderberry tincture, Elderberry powder and licensed Elderberry nursery for cuttings. Open seven days a week January – April, 8am – 6pm. Free shipping on all on-line orders.

**Elmartin Farm FS**[elmartinfarm.com](http://elmartinfarm.com)

Kim & Shawn Martin  
594 Windsor Rd, Cheshire, MA 01225  
413 388-3990 or 413 281-4320

Family farm of eight generations. Grass-fed/finished Angus beef and pork available at our farm store.

**Fahey Family Honey Farm**[On Facebook](#)

Antoine & Kelly Fahey  
225 County Rd., Pownal, VT 05261  
802 823-5837

Fahey Family Honey Farm brings raw local honey from our family to you.

**Full Well Farm CSA FS HIP SNAP**[fullwellfarm.com](http://fullwellfarm.com)

Laura Tupper-Palches & Meg Bantle  
313 East Rd., Adams, MA 01220  
413 441-1638

No-till vegetables, herbs, & flowers. Synthetic pesticide/ herbicide free. Vegetable & flower CSAs, low cost CSAs, wholesale, DIY event flowers. Farm stand/ online store/ North Adams Farmers Market.

**Hoppy Valley**[On Facebook](#)

Peter Hopkins  
1203 Burrington Rd., Pownal, VT 05261  
802 236-4338

Small Vermont farm specializing in locating, nurturing and making heirloom hops available to brewers and growers, we offer a unique line of sauces and condiments for retail and food service.

**Jennings Brook Farm FS**[On Facebook](#)

Steve & Maureen Jennings  
83 Beach Hill Rd., New Ashford, MA 01237  
413 458-8438

Pure maple syrup all sizes and grades. Small farm stand inside our Sugar House during daylight hours.

**Laughing Earth CSA FS**[laughingearth.farm](http://laughingearth.farm)

Zack Metzger  
3842 NY 2, Cropseyville, NY 12052  
518 821-8449

Organic vegetables through our FarmShare program, organic chicken & eggs, pasture-raised pork, cut flowers in season, organic turkeys for Thanksgiving.

**Many Forks Farm CSA FS HIP SNAP**[manyforksfarm.com](http://manyforksfarm.com)

Sharon Wyrrik  
1360 River Rd., Clarksburg, MA 01247  
413 281-1814

Vegetables, herbs, flowers, berries sold via CSA shares, Friday farm stand and farmers markets. Weekly pre-order of farm baked goods & value-added products. No GMOs, chemical fertilizers, pesticides, or herbicides. Reduced-price CSA shares available.

**Mighty Food Farm CSA**[mightyfoodfarm.com](http://mightyfoodfarm.com)

Lisa MacDougall  
280 Rod and Gun Club Rd.  
Shaftsbury, VT 05262  
781 307-6801

Focus on high quality and nutrient-dense produce. Year-round production. Offers free choice CSA quality certified organic vegetables, flowers, herbs, strawberries. Pick your own crops for members. Wholesale available.

**Moderski Emu Acres**

Sandra Moderksi  
Adams, MA 01220  
413 743-3159

Emu eggs, blown out for crafting, and emu feathers for making flies for fishing.

**Oakwood Farm**

Kathryn Eichholz  
279 W. Hawley Rd.  
Charlemont, MA 01339  
413 339-5322

Dried lavender bouquets, culinary herb blends, soap, lotion, lip balm, hand-crafted raku ceramic art and bonsai pots. Select grown and yamadori bonsai.

**Starry Ridge Farm CSA FS**[On Facebook](#)

Kat Ragone & Kolin Buzarak  
37 Fred Moon Rd.  
Petersburgh, NY 12138  
508 292-3800

Regenerative no-till hillside farm with a 50 member vegetable CSA. Maple syrup, seasonal cut flowers, eggs, grass-fed beef, and pastured pork for retail. Williamstown Farmers Market. Farm store coming this summer at 18914 Route 22, Petersburg, NY.



*High Lawn Farm, Lee, MA*



**SCAN FOR THE SEARCHABLE MAP OF LOCAL FOOD & FARMS**

Find your way around the Berkshires to shop for fresh, local food at farms and businesses. Visit [www.berkshiregrown.org/food-and-farms-map](http://www.berkshiregrown.org/food-and-farms-map).

# Farms & Growers



Brattle Farm, Pittsfield, MA

- CSA** Community Supported Agriculture (Farm Shares)
- FS** Farm Store
- HIP** Healthy Incentives Program
- PYO** Pick Your Own
- SNAP** Supplemental Nutrition Assistance Program
- WIC** Supplemental Nutrition Program for Women, Infants & Children

## **Sweet Brook Farm & Sweet Brook Beef Company FS**

[sweetbrookfarms.com](http://sweetbrookfarms.com)

Sarah & Darryl Lipinski  
207 Woodcock Rd.  
Williamstown, MA 01267  
413 217-0092

Maple syrup & maple cream. Grass-fed, pasture-raised beef. Selling at Williamstown Farmers Market & farm store. Beef Shares available.

## **the GOAT PROJECT FS**

[thegoatproject.net](http://thegoatproject.net)

Becca Knouss  
1107 Pleasant Valley Rd.  
Bennington, VT 052  
802 442-1107

We are a small goat dairy selling raw goat milk, goat milk soap, goat meat, and duck eggs. Wholesale is available direct or through Faire.com.

## **Wendling Farm**

Averill & Kate Cook  
753 Oblong Rd.  
Williamstown, MA 01267  
413 458-5326

A field crop, beef and woodland operation. Small square bales, round dry and silage bales available. Log length firewood. Other field crops are possible on a contract basis.

## **Wildstone Farm CSA**

[wildstonefarm.com](http://wildstonefarm.com)

Joy & John Primmer  
536 Schenkar Rd.  
Pownal, VT 05261  
802 823-0141  
Vermont Organic Farmers and Real Organic Project certified organic vegetables, eggs, sunflowers & bedding plants. Seed Garlic. Summer CSA, May – October. Since 1989.

## **Woodlife Ranch**

[woodliferanch.com](http://woodliferanch.com)

Mario Gagliardi  
1352 Hancock Rd.  
Williamstown, MA 01237  
413 458-7009

Organic golden, amber and dark maple syrup, as well as Applewood-smoked and bourbon barrel-aged. Raw and bourbon barrel-aged honey. Firewood (call). Online website orders only, available for on-farm pick-up. Wholesale available.

## CENTRAL COUNTY

### **Abode Farm CSA SNAP PYO**

[abodefarm.com](http://abodefarm.com)

Evan Thaler-Null & Sarah Steadman  
9 Chairfactory Rd., New Lebanon, NY 12125  
Certified organic horse and tractor-powered vegetable farm. Winter and Summer CSA shares. Wholesale available. Sells at New Lebanon Farmers Market.

### **Bartlett's Orchard FS PYO**

Ron & Cindy Bartlett  
575 Swamp Rd., Richmond, MA 01254  
413 698-2559

17 varieties of apples, sweet corn, vegetables, tomatoes, pumpkins, bedding plants, cut flowers and ornamental squash. Apple cider doughnuts, pies and fresh apple cider. Seasonal farm store.

### **The Berry Patch CSA FS PYO**

[theberrypatch.net](http://theberrypatch.net)

Dale-Ila Riggs & Don Miles  
15589 State Rt. 22  
Stephentown, NY 12168  
518 733-1234

Premium quality no spray & low spray berries, vegetables, melons, & cut flowers available through our honor system farm store, Free Choice Farm Share Program, or on-line ordering with contactless pick up at our farm stand. Thanks to an innovative exclusion netting system, we are able to offer pesticide-free (and maggot free) berries. No pesticides used.



**Bittersweet Farm FS**[On Facebook](#)

David Halley  
973 Barker Rd.  
Pittsfield, MA 01201  
413 499-0200

Wide variety of fruits and vegetables and beautiful fresh cut flower bouquets. Fall pumpkins, gourds, mums and corn stalks. Farm stand open July – Oct, daily 9am – 7pm.

**Blue Heaven Blueberry and Raspberry Farm PYO**[blueheavenblueberries.com](#)[On Facebook](#)

Joe & Donna Pease  
246 Skyline Trail  
Middlefield, MA 01243  
413 623-8846

Seasonal pick-your-own blueberries & raspberries after July 1. Call ahead for availability. Open Tues – Sun, 9am – 4pm. Wholesale available.

**Brattle Farm FS**[brattlefarm.com](#)

Donna & Bill Chandler  
600 Williams St., Pittsfield, MA 01201  
413 822-1516

Seasonal vegetables, lamb, honey, eggs and other seasonal items. Our own yarn and wool. Tunis and Natural Colored Merino sheep for breeding stock. Accepts leaves for composting. Farm stand open year-round.

**Clark's Nursery**[On Facebook](#)

Brittany Clark & Dan Sumner  
1210 Pleasant St. (Rte. 102), Lee, MA 01238  
413 243-0660

[Clarksnursery@gmail.com](#)

Annuals, perennials, hanging baskets, vegetable and herb starts, seeds, Fall mums, Christmas trees and wreaths. Fox Farm, Fafard & Lambert soils, compost, and mixes. Open April – December.

**Climbing Tree Farm**[climbingtreefarm.com](#)

Schuyler & Colby Gail  
436 West Hill Rd., New Lebanon, NY 12125  
413 884-3446

Pasture-raised, milk-fed heritage pork. Whole animals to butchers and restaurants. Whole or half pigs for the home freezer.

**Elzires Acre Goat Milk Soap FS**[GetGoatSoap.com](#)

Chad Steiner  
111 Wheeler Rd., Princeton, MA 01541  
978 660-6673

Goat milk soap from our organically-fed goats. All natural and organic ingredients. Essential oils used for fragrance. Soap is free from palm oil, palm kernel oil, coconut oil, soy oil, detergents, micas, colorants, and fragrance oil.

**Flynn Farm FS**

Nancy & Jim Flynn  
610 Tamarack Rd.  
Pittsfield, MA 01201  
413 329-7482

Seasonal vegetables: beets, beans, peas, greens, onions, corn, potatoes, squash, peppers, tomatoes, pumpkins. Also selling mums, sunflowers, raspberries, and maple syrup. Farm stand July – Oct.

**Forgotten Pines Farm**

Dr. Michelle Ross  
155 Kessler Rd., Lanesborough, MA 01237  
802 372-7199

Forest-grown, all-natural mushrooms.

**Forthill Farm FS PYO SNAP**

Quinto Family  
325 Fort Hill Ave., Pittsfield, MA 01201  
413 822-3342

Sweet corn, tomatoes, winter squash, melons & berries. Flower bouquets, mums, corn stalks. Fresh-cut greens & herbs on request. Christmas trees & decorated wreaths in season. Farm-fresh eggs, grass-fed Angus beef & pasture-raised heritage pork available year-round. Farm stand open Mon – Sat 10am – 6pm, Sun 10am – 5pm.

**Foxtrot Farm CSA PYO**[foxtrotherbfarm.com](#)

Abby Ferla  
1237 Baptist Corner Road, Ashfield, MA  
Postal code- Shelburne Falls, MA 01370  
[foxtrotherbfarm@gmail.com](#)

A certified organic farm. Online sales for bulk fresh & dried organic herbs and specialty produce to apothecaries, restaurants, and makers. Our Healing Foods CSA makes climate-resilient, high-nutrient foods available to Western MA and Southern VT. Offering discounts to BIPOC and Farmer2Farmer for other small-scale farmers. Sliding scale pricing available to non-profits and individuals.

**Frederick Christmas Tree Farm PYO**

Mike Frederick  
360 Washington Rd., (Rt. 8), Hinsdale, MA 01235  
413 655-8551

Fir, pine, and spruce Christmas trees. Choose and harvest, no pre-cut.

**Gray Raven Farm FS**[grayravenfarm.net](#)

Daniel & Sharon Bergeron  
6 Johnny Cake Hill Rd., Middlefield, MA 01243  
413 822-0603

Handcrafted goat milk soaps, goat milk & honey lotions, pure raw honey, seasonal vegetables & fruits.

**Green Heron Farm CSA FS**[On Instagram](#)

Stephan Lanphear  
452 Washington Rd., Hinsdale, MA 01235  
413 212-7237

Vegetable CSA. Produce available at two farm stands: on-farm, and at 341 Elm St., Pittsfield. Also selling other locally-sourced farm products.

**Hancock Shaker Village CSA**[hancockshakervillage.org](#)

1843 W Housatonic St., Pittsfield, MA 01201  
413 443-0188

Summer CSA shares of local produce grown with care and harvested at its peak. Winter CSA shares of pasture-raised meat. Farm tours and workshops about gardening.

**High Lawn Farm FS**[highlawnfarm.com](#)

Roberto Laurens  
535 Summer St., Lee, MA 01238  
413 243-0672

Historic third-generation family-owned dairy farm. Artisanal cheese, butter, ice cream and more made with pure Jersey cow's milk. Visit our farm store any day of the week, enjoy an ice cream cone, and meet our Jersey girls!

**Holiday Brook Farm CSA FS HIP SNAP**[holidaybrookfarm.com](#)

Ruth & Dicken Crane  
100 Holiday Cottage Rd., Dalton, MA 01226  
413 684-0444

Grass-fed beef & lamb, pastured heritage pork, organic vegetables, maple products, hay, compost, and firewood. Wholesale available. Wedding venue; seasonal pancake breakfasts. Self-serve farm store open every day 9 – 5. Accept check, cash or card.



**SCAN FOR THE SEARCHABLE MAP OF LOCAL FOOD & FARMS**

Find your way around the Berkshires to shop for fresh, local food at farms and businesses. Visit [www.berkshiregrown.org/food-and-farms-map](http://www.berkshiregrown.org/food-and-farms-map).

# Farms & Growers



**CSA** Community Supported Agriculture (Farm Shares)  
**FS** Farm Store  
**HIP** Healthy Incentives Program  
**PYO** Pick Your Own  
**SNAP** Supplemental Nutrition Assistance Program  
**WIC** Supplemental Nutrition Program for Women, Infants & Children

## Ioka Valley Farm

**FS PYO**

[iokavalleyfarm.com](http://iokavalleyfarm.com)

Don Leab, Rob & Melissa Leab

3475 Rt. 43

Hancock, MA 01237

413 738-5915

Natural home-grown beef (no hormones or antibiotics). Maple syrup, sugar and cream. Christmas trees, PYO or fresh cuts. PYO pumpkins. Winter squash, blueberries. The Calf-A is open for pancake meals on weekends, mid-Feb – early April, 8am – 3pm.

## Jaeschke's Orchard

**FS HIP PYO SNAP**

[on Facebook](#)

Chuck Wandrei

736 Crane Ave.

Pittsfield, MA 01201

413 443-7180

Apples, plums, pears, corn and vegetables. Fresh cider. Greenhouse flowers, potted plants, annuals, Christmas trees. PYO apples at the orchard, 23 Gould Rd., Adams.

## Justamere Tree Farm **FS**

[justameretreefarm.com](http://justameretreefarm.com)

Kelly Auer, Deb Rocque & Kim Trust

248 Patterson Rd., Worthington, MA 01098

413 238-5902

Women-owned maple farm producing maple syrup and other quality maple products using 100% sustainable energy.

## Kinderhook Creek Farm **FS**

Larry Eckhardt and Family

5168 So. Stephentown Rd.

Corner of Rensselaer County Rte. 27

and Goold Rd., 3.5 miles from US Rte. 20,

Stephentown, NY 12168

518 733-5137

Family-owned & operated for 64 years. Fresh sweet corn and other seasonal produce to wholesalers, retail outlets and other farmers throughout the region. Choose from a wide variety of farm fresh vegetables and produce at stand located at the farm. Open from 9am until dark daily from July – October 1. Variety of quality hay, straw and grain for livestock producers throughout the area. Hay and straw are available in small and large square bales. Silage hay is available in wrapped, large square bales. Delivery of hay and straw is possible.

## Lakeview Orchard **FS**

[lakevieworchard.com](http://lakevieworchard.com)

David & Daniel Jurczak

94 Old Cheshire Rd.

Lanesborough, MA 01237

413 448-6009

Apples, peaches, pears, plums, cherries, raspberries, blueberries, currants, sweet corn, winter squash, pumpkins, gourds, hanging baskets, mums, cider donuts, whoopie pies, pies, pastries, apple cider, honey, pierogi, golumpki, kielbasa and more. IPM. Farm Stand open May – Oct, Thurs – Mon, 9am – 5pm.

## Lion's Tooth Farm **FS**

[lionstoothfarm.com](http://lionstoothfarm.com)

Dominique Frink & Jordan Koch

1288 Old Route 9

Windsor, MA 01270

413 464-2863

[dominique@lionstoothfarm.com](mailto:dominique@lionstoothfarm.com)

Offering artisan breads and bagels, granola, baked goods, duck and chicken eggs, beef, pork, lamb and goat cuts, seasonal produce and more at local farmers markets. Gluten free options available. Farm pickup for specific orders by appointment year-round, call or email to place an order for farm pick up. Self-serve farm stand open May – Oct, 7 days/week 9am – 4pm.

## Little Seed Gardens **CSA**

[littleseedgardens.com](http://littleseedgardens.com)

Claudia Kenny & Willy Denner

541 White Mills Rd.

Valatie, NY 12184

518 392-0063

100-acre family farm established in 1995. Certified organic by NOFA-NY and the Real Organic Project. Little Seed celebrates the nurturing power of people by growing and sharing food in ways that strengthen our living communities. Vegetable CSA, beef shares, and Holistic Management Training & Consulting services are available.

## Mycoterra Farm **FS SNAP HIP**

[mycoterrafarm.com](http://mycoterrafarm.com)

Julia Coffey

75 Stillwater Rd.

South Deerfield, MA 01373

413 397-3654

Diverse varieties of quality gourmet mushrooms handcrafted in small batches and picked fresh and sold at farm store. Online sales at [massfooddelivery.com](http://massfooddelivery.com) and [mycoterrafarm.com](http://mycoterrafarm.com).



### Natural Roots Farm CSA FS HIP PYO SNAP

[naturalroots.com](http://naturalroots.com)

David Fisher

888 Shelburne Falls Rd., Conway, MA 01341  
413 369-4269

Horse-powered CSA farm using organic practices to grow a variety of produce, berries, root crops and pastured eggs. Summer and Winter CSA (HIP/SNAP shares available). Farm store features variety of local meat, dairy, bread, yogurt, honey, maple syrup, fruit, and more. Open year-round, accepts cash, check, credit cards and SNAP/EBT (by appointment only).

### New Leaf Farm CSA HIP SNAP

[newleaffarm.net](http://newleaffarm.net)

Mike Libsch & Ellen Poggi

15 Crystal Springs Dr., New Lebanon, NY 12125  
518 794-0084

Sustainably grown vegetables and cut flowers for farmers markets, we use innovative tools, creative practices and organic inputs to produce high-quality vegetables and cut flowers for farmers markets. No crops grown with synthetic fertilizers or chemical sprays.

### Old Friends Farm CSA HIP SNAP

[OldFriendsFarm.com](http://OldFriendsFarm.com)

Amherst, MA

Certified Organic and Certified Real Organic Project salads, vegetables, flowers, specialty products, Northeast-grown ginger & turmeric grown in a healthy workplace. Wholesale and mail-order available.

### Olsen Farm

[Olsen-farm.com](http://Olsen-farm.com)

Kristen Tool & Chris Wheeler

50 Olsen Rd.  
Lanesborough, MA 01237

We strive to farm sustainably using organic and permaculture gardening techniques as we create a teaching farm where community members can learn and grow through education, hands-on experiences and community programming. Online sales available.

### Raven & Boar Farm Hudson Valley Charcuterie

[ravenandboar.com](http://ravenandboar.com)

[hudsonvalleycharcuterie.com](http://hudsonvalleycharcuterie.com)

On Instagram

Ruby Duke

111 County Rte. 34  
East Chatham, NY 12060

917 292-8542

Raven & Boar is a woman-owned pig farm and charcuterie kitchen raising heritage breed, whey-fed, pastured pork on about 100 acres. Hudson Valley Charcuterie produces seasonal, small-batch artisanal products made with Raven & Boar pastured pork, fresh free range eggs and local produce and herbs. At the Rhinebeck Farmers Market, Hudson Farmers Market, growNYC's Saturday Ft. Greene Park Greenmarket, Sunday Jackson Heights Greenmarket, as well as special events and pop-up locations.

### Red Hawk Farm FS

Bonnie & William LaPierre

1031 State Rd., Richmond, MA 01254

[RedHawkFarm2015@gmail.com](mailto:RedHawkFarm2015@gmail.com)

Offering organically grown heirloom vegetables at our Veteran-owned farm stand. We offer 15 types of vegetables with 45 varieties and nurture their New England connection through seed saving and seed exchange. Open mid-July – Sept, Tues – Sun 10am – 6pm.

### Red Shirt Farm CSA FS HIP SNAP

[redshirtfarm.com](http://redshirtfarm.com)

Jim Schultz

60 Williamstown Rd.

Lanesborough, MA 01237

413 822-9250

No-till, regenerative, family-owned farm with a wide assortment of naturally-grown vegetables, herbs, and flowers. North Adams Farmers Market, CSA (SNAP/HIP shares accepted), and wholesale to restaurants. Specializing in tomatoes. NE-grown ginger available mid-September – November. Farm Store and Community Commercial Kitchen coming soon!

### Rock and Root Farm FS

Zachary Zenk

735 N Main St., Lanesborough, MA 01237

978-877-7924

[rockandrootfarm@gmail.com](mailto:rockandrootfarm@gmail.com)

A small farm growing fresh vegetables, root crops, sunflowers, and pumpkins. Self-serve, Pay What You Can farm stand, open mid-August – October 31.

### Rock City Mushrooms

[rockcitymushrooms.com](http://rockcitymushrooms.com)

Henry Corsun & Sara Querbes

85 Hartigan Rd., Old Chatham, NY 12136

518 821-4282

Indoor-cultivated high quality Shiitake and Oyster mushrooms available at local farmers markets, restaurants, and food stores.

### Salsedo Family Farm

Dr. Carl & Beth Salsedo

5 Best St., Chesterfield, MA 01012

860 992-8389

[carl.salsedo@uconn.edu](mailto:carl.salsedo@uconn.edu)

Certified organic garlic growers with five cultivars focusing on high quality and a nutritious product. Half of the crop grown in a high tunnel and ready the second week of June. Field grown garlic ready mid- to late July. Wholesale and retail. Visitors are welcome, call or e-mail for visits.



YundWell Pastured Poultry, Canaan, NY



**SCAN FOR THE SEARCHABLE MAP OF LOCAL FOOD & FARMS**

Find your way around the Berkshires to shop for fresh, local food at farms and businesses. Visit [www.berkshiregrown.org/food-and-farms-map](http://www.berkshiregrown.org/food-and-farms-map).

# Farms & Growers



**CSA** Community Supported Agriculture (Farm Shares)  
**FS** Farm Store  
**HIP** Healthy Incentives Program  
**PYO** Pick Your Own  
**SNAP** Supplemental Nutrition Assistance Program  
**WIC** Supplemental Nutrition Program for Women, Infants & Children

## Samascott Orchards **FS PYO**

[samascott.com](http://samascott.com)  
 Jake Samascott  
 518 758-7224

5 Sunset Ave.

Kinderhook, NY 12106

Family-owned & operated farm. PYO fruits and vegetables ranging from apples and berries to kiwis, cucumbers, and pumpkins. Open seasonally, June – October. Visit Samascott's Garden Market at 65 Chatham St., Kinderhook NY.

## Second Drop Farm **FS PYO**

[On Instagram](#)

Patrick Elliott

551 North Main St.

Lanesborough, MA 01237

413 822-0355

A family-owned historic farm on 17 acres. Pick-your-own blueberries, raspberries and flowers. Farm store offering local produce, meat, dairy and gifts. Self-serve flower stand with fresh cut bouquets. Wholesale available.

## Shaker Creek Farm

[ShakerCreekFarm.com](http://ShakerCreekFarm.com)

Alison Basdekis & Keegan Schelling

266 Winslow Rd., East Nassau, NY 12062

413 297-7039

Pasture-raised chicken, geese, perennial nursery stock, cut flowers, vegetables, herbs, and cover crop seeds.

## Square Roots Farm **FS CSA SNAP**

[sqrarerootsfarm.org](http://sqrarerootsfarm.org)

Ashley Amsden & Michael Gallagher

95 Old Cheshire Rd.

Lanesborough, MA 01237

413 446-1446

Pasture-raised chicken, turkey, pork, eggs. 100% grass-fed beef. GMO, hormone, antibiotic free. CSA shares for flowers, eggs and chicken, plus whole or half pigs, and Thanksgiving turkeys. Online store, home delivery, farmers markets, wholesale accounts.

## Sweet Somerby Farm

[sweetsomerby.com](http://sweetsomerby.com)

Sarah Schaeffer

15 Maple Dr.

West Stockbridge, MA 01266

917 455-1656

Small farm raising Cormo and Cormo mix sheep. After sending fleeces to the mill for spinning, our yarn is dyed with plants found on farm land as well as natural dyes from sustainable sources. Sold online and at West Stockbridge and Berkshire Grown Winter Farmers Markets.

## The Farm at the Winthrop Estate **CSA**

[WinthropEstate.com](http://WinthropEstate.com)

Ethan & Jamie Berg

107 Yokun Ave., Lenox, MA 01240

413 637-0007

Small organic vegetable farm.

## Three Maples Market Garden

**CSA FS**

[threemaplesmarketgarden.com](http://threemaplesmarketgarden.com)

Cian & Amanda Dalzell

98 State Line Rd., W. Stockbridge, MA 01266

413 329-8601

A variety of naturally grown vegetables, culinary herbs, and cut flowers. 18-week CSA begins mid-June. Farm stand open mid-May – Oct.

## Uprising Farm **SNAP**

[on Facebook & Instagram](#)

Jonah Millett

63 Hankey Mull Rd.

New Lebanon, NY 12125

518 653-1124

Organically-grown vegetables, fruit, herbs, flowers, mushrooms, and foraged foods available at New Lebanon Farmers Market, Pittsfield Farmers Market, restaurants, and retail stores. Homestead and farmscape consulting, and land management.

## Whitney's Farm Market and Garden Center **FS PYO**

[whitneysfarm.com](http://whitneysfarm.com)

Eric Whitney

1775 South State Rd., Cheshire, MA 01225

413 442-4749

Greenhouse, nursery, landscaping, deli, bakery, farm-grown produce, free petting zoo. Open Apr – Dec.

## YundWell Pastured Poultry **FS**

[YundWell.com](http://YundWell.com)

Michael Yund

1715 County Route 5, Canaan, NY 12029

518 929-5394

Pasture-raised eggs, whole and parted chickens, and turkeys for Thanksgiving. Wholesale available to restaurants and other accounts. Order online or purchase from self-serve farm stand, open 7 days/week, daylight hours. Contact [info@YundWell.com](mailto:info@YundWell.com) for details.



## SOUTH COUNTY

**Adamah Farm CSA**[fvcsa.adamah.org](http://fvcsa.adamah.org)

116 Johnson Rd., Falls Village, CT 06031

Organic vegetables grown with regenerative practices, educational programs, bulk seedling sales for pre-order, and agroforestry.

**Beavertides Farm CSA FS**[Beavertidesfarm.com](http://Beavertidesfarm.com) and on Instagram

Dan Carr &amp; Marleen van Gulick

44 Cobble Rd.

Falls Village, CT 06031

917 684-4691

Offering 100% grassfed meat from sustainably raised cattle, sheep, goats, and raw wild meadow honey. Offering a yearly Beekeeper Course and farm events, including private and group farm tours and dinners that share our beekeeping, animal husbandry, and sustainable living practices. Goat and Lamb Farm Club shares and meat sales online and at the farm available.

**Berkshire Bounty Farm**

Steve Cunningham

29 Berkshire Woods Rd., Southfield, MA 01259

Growing USDA-Certified organic vegetables, herbs and fruit exclusively to supply local food pantries to help with food insecurity issues.

**Berkshire Wildflower Honey**[berkshirehoney.com](http://berkshirehoney.com)

Peter Chapin

Great Barrington, MA 01230

917 623-1313

Raw unfiltered honey, beeswax moisturizers, including CBD moisturizer, and beeswax candles. Selling online, and through Mill River General Store, 10 Mill River-Great Barrington Rd. Mill River, MA. Wholesale to restaurants.

**Blue Hill Farm**[bluehillfarm.com](http://bluehillfarm.com)

Sean Stanton

398 Blue Hill Rd.

Monterey, MA 01245

413 429-6598

[info@northplainfarm.com](mailto:info@northplainfarm.com)

100% Grass-fed raw milk, available at the dairy barn or at the farm store of our sister farm, North Plain Farm, located at 342 N. Plain Road in Great Barrington.

**Blueberry Hill Farm PYO FS**

On Facebook:

[Blueberry-Hill-Farm-Berkshires](https://www.facebook.com/Blueberry-Hill-Farm-Berkshires)

The R.W. Austin Family

358 East St., Mount Washington, MA 01258

413 528-1479

PYO organic blueberries. Hours subject to change, check Facebook for updates.

**Cedar Farm Wholesale**[cedarfarmwholesale.com](http://cedarfarmwholesale.com)

Kate Swift &amp; Marilyn Cederoth

365 Old Post Rd., Ghent, NY 12075

518 965-0552

Wholesale specializing in unusual cut flowers including peonies, foxglove, anemones, ranunculus, clematis, callas &amp; more. Growing in 12 greenhouses and on 20 acres of field plantings.

**Chaseholm Farm**

CSA FS

[chaseholmfarm.com](http://chaseholmfarm.com)

Sarah Chase

115 Chase Rd., Pine Plains, NY 12567

518 339-2071

Organic, 100% grass-fed dairy with a small but mighty farm store offering raw milk, grass-fed beef, pastured pork, yogurt, cheeses, eggs &amp; other local vittles. We also host monthly events, check website for schedule and ticket purchasing information.

**Chaseholm Farm Creamery FS**[cfcreamery.com](http://cfcreamery.com)

Rory Chase

100 Chase Rd.

Pine Plains, NY 12567

518 398-0368

Organic and 100% grass-fed dairy. Many styles of cheese in the French tradition. Farm store at 115 Chase Rd.

**Colfax Farm**[colfaxfarm.com](http://colfaxfarm.com)

Molly Comstock

West Stockbridge, MA 01266

607 743-8190

Visit our website for updates on the move for Colfax Farm.

**Common Hands Farm CSA**[Commonhandscsa.com](http://Commonhandscsa.com)

Dan McManus &amp; Keri-Sue Lewis

2187 County Rt 11

Hillsdale, NY 12529

Dedicated to providing fresh, high-quality produce bringing biodynamic agriculture into the future. Over 100 crops are grown on a 24-acre farm. CSA members receive weekly boxes with an assortment of our 150+ varieties of vegetables and herbs. Offering value-added products made from crops. Food delivery available to doorstep weekly in Philmont, Hudson, and Hillsdale.



Colfax Farm



SCAN FOR THE SEARCHABLE MAP OF LOCAL FOOD &amp; FARMS

Find your way around the Berkshires to shop for fresh, local food at farms and businesses. Visit [www.berkshiregrown.org/food-and-farms-map](http://www.berkshiregrown.org/food-and-farms-map).

# Farms & Growers



<b>CSA</b>	<b>Community Supported Agriculture (Farm Shares)</b>
<b>FS</b>	<b>Farm Store</b>
<b>HIP</b>	<b>Healthy Incentives Program</b>
<b>PYO</b>	<b>Pick Your Own</b>
<b>SNAP</b>	<b>Supplemental Nutrition Assistance Program</b>
<b>WIC</b>	<b>Supplemental Nutrition Program for Women, Infants &amp; Children</b>

## **Dancing Greens Farm FS**

[dancing-greens.com](http://dancing-greens.com)

Jamie Nadler  
214 Blue Hill Rd.  
Great Barrington, MA 01230  
914 393-6338

Vegetables, herbs, and flowers grown on a no-till, women-owned farm. Partnering with makers, growers and creators to host pop-up dinners and educational events with special care taken for food allergies and intolerances.

## **Dandelion Hill Farm FS SNAP**

[www.dandelionhillfarms.com](http://www.dandelionhillfarms.com)

Melissa & Peter Martin  
204 Hulett Hill Rd.  
Sheffield, MA 01257  
413 429-7898

Biodynamic/organic farm offering seasonal, organic, non-GMO vegetables, meats, goat milk products, and fresh eggs. Pasture-raised and grass-fed meats, including goat, lamb and chicken. Raw goat milk CSA available spring – fall, goat cheese, goat milk soap, goat skin pelts and lamb pelts. Order all products online; inquire about wholesale prices.

## **Equinox Farm**

[equinoxfarmlberkshires.com](http://equinoxfarmlberkshires.com)

Peter Chapin  
PO Box 1055, Great Barrington, MA 01230  
917 623-1313

Mesclun salad greens, arugula, baby spinach, baby kale. Wholesale available to restaurants, schools, distributors. Retail from Mill River General Store, 10 Mill River-Great Barrington Rd., Mill River.

## **Et Cetera Farm FS**

Yong Yuk & Jeana Park  
936 County Route 21, Hillsdale, NY 12075  
518 672-4250

Certified organic baby ginger, bokchoi, daikon, lettuce, napa cabbage, onion, rice, fall strawberries, tomatoes, and more.

## **Fairfield Farm at The Hotchkiss School**

[hotchkiss.org/our-school/our-campus/fairfield-farm](http://hotchkiss.org/our-school/our-campus/fairfield-farm)

Michael Webster  
400 Sharon Rd., Lakeville, CT 06039  
860 435-3754

The 287-acre Fairfield Farm is a unique resource where students and teachers get hands-on experience in organic, sustainable agriculture. The Farm supplies 30% of the produce used in the Dining Hall during the fall semester and 7% of the overall produce for the academic year.

## **The Farm at Miller's Crossing**

**CSA FS SNAP**

[farmatmillerscrossing.com](http://farmatmillerscrossing.com)

Katie Smith & Chris Cashen  
81 Roxbury Rd., Hudson, NY 12534  
518 851-2331

Specialty organic vegetables. Organic grass-fed beef. Organic pork, maple syrup, cream, candy & sugar. Bedding, flower & vegetable plants. Wholesale, retail & Hudson Farmers Market.

## **Farm Girl Farm FS**

[farmgirlfarm.com](http://farmgirlfarm.com)

Laura Meister  
342 North Plain Rd.  
Great Barrington, MA 01230  
413 262-8707

Locally grown vegetable, flower, and herb seedlings for home gardeners and small-scale farmers. Standard & heirloom varieties – wide selection of heirloom tomato starts. Located on North Plain Farm property.

## **Fern Farm FS**

[tinyurl.com/fernfarm](http://tinyurl.com/fernfarm)

[fernfarmllc@gmail.com](mailto:fernfarmllc@gmail.com)

**Farm Stand Location:**

6 Cross Rd.  
Mount Washington, MA

Pasture-raised chicken, chicken eggs, and duck eggs. Seasonally available products include wood-fired maple syrup, vegetables, cut flowers, and more. Confirm current availability and/or order online. Farm store open seven days a week starting this summer. Email or visit us @fernfarmstead on Instagram.

## **Gaetano's Organic Farm**

**CSA FS PYO**

Guy McKay  
453 Main St., Becket, MA 01223  
413 329-3862

Baystate Certified Organic seasonal fruits and vegetables including lettuce, spinach, chard, and kale; pick-your-own raspberries. Farm stand opens in April, call for details.

## **Gould Farm CSA**

[gouldfarm.org](http://gouldfarm.org)

Nathan Yaple

54 Gould Rd., Monterey

Our CSA provides locally grown produce and other farmstead products.



### Graylight Farm

[graylightfarm.com](http://graylightfarm.com)

Eric &amp; Martha Suquet

515 West End Rd., Hillsdale, NY 12529

401 924-0801

[farmer@graylightfarm.com](mailto:farmer@graylightfarm.com)

Pasture-raised pork available at the Copake Hillsdale Farmers Market or pre-arranged on-farm sales.

### Grimaldi Farm FS

[grimaldifarmstore.com](http://grimaldifarmstore.com)

Dominic Grimaldi

22 Old Talerico Rd., Ghent, NY 12075

518 929-3420

NOFA-NY certified organic grass-fed beef and farm fresh eggs.

### Hawk Dance Farm CSA FS

[On Facebook](https://www.facebook.com/hawkdancefarm)
[hawkdancefarm.com](http://hawkdancefarm.com)

Diane Creed &amp; Damon Clift

362 Rodman Rd., Hillsdale, NY 12529

518 325-1430

Heirloom, seasonal vegetables and herbs, vegetable & herb plants, cut flowers, 100% beeswax candles, jams. Local delivery & CSA shares available. Self-service farm stand, mid-morning to eve (call for availability).



Woven Roots Farm & Education Center, Tyringham, MA

### Hawthorne Valley Farm

**CSA FS SNAP**
[hawthornevalleyfarm.org](http://hawthornevalleyfarm.org)

Martin Ping

327 County Route 21C, Ghent, NY 12075

518 672-7500

Organic and Biodynamic milk products including raw cow's milk, yogurt and cheeses, certified Biodynamic, organic, Animal Welfare Approved beef and pork. Seasonal Biodynamic vegetables. Organic baked goods, breads & pastries. Farm store open daily.

### Hickory Ridge Farm

[On Facebook](https://www.facebook.com/hickoryridgefarm)

Thomas Stalker

780 Hartsville New Marlboro Rd.

New Marlborough, MA 01230

### Hidden Mountain Farm

[On Instagram](https://www.instagram.com/hiddenmountainfarm)

Christian Stoval

40 Stone Manor Dr.

New Marlborough, MA 01230

617 771-4343 or 413 229-0379

Grass-fed and finished lamb raised in intensive rotational grazing system, registered Border Leicester ewes and breeding stock.

### Howden Farm PYO

[howdenfarm.com](http://howdenfarm.com)

Bruce Howden

303 Rannapo Rd., Sheffield, MA 01257

413 329-8726

Sweet corn, pumpkins, and fall raspberries. Weather dependent PYO pumpkins and fall raspberries. Pumpkin seeds available for purchase. Delivery by arrangement.

### Husky Meadows Farm CSA

[huskymeadowsfarm.com](http://huskymeadowsfarm.com)

Brett Ellis

26 Doolittle Dr., Norfolk, CT 06058

860 540-4757

Certified organic vegetables, fruits, herbs and mushrooms. Peak season CSA. Norfolk, CT Farmers Market.

### Indian Line Farm CSA HIP SNAP

[indianlinefarm.com](http://indianlinefarm.com)

Elizabeth Keen

57 Jug End Rd., Great Barrington, MA 01230

413 429-5978

Certified naturally-grown vegetables, herbs, cut flowers & vegetable seedlings. At the Great Barrington Farmers Market, local stores, and restaurants.

### Joshua's Farm

[joshuasfarm.com](http://joshuasfarm.com)

Brigitte Ruthman

45 Dodd Rd., Sandisfield, MA 01255

860 671-0327

Fresh, unpasteurized milk from grass-fed Jersey and Guernsey cows. Cows keep their calves on this historic New England farm. Sales through CSA/herdshare only. A2 milk & free-range eggs.

### Julie the Garden Fairy at Willow View Farm FS PYO

[On Facebook & Instagram](https://www.facebook.com/juliethegardenfairy)

Julie Harrison

1321 Sheldon St., West Suffield, CT 06093

860 670-3089

Flower farm stand located on the CT/MA line offering eggs year round, seasonal flowers from spring until frost, and handmade Christmas wreaths and arrangements starting in November; workshops and events. PYO field includes thousands of Dahlias and many other annuals.

### Little Apple Farm and Cidery FS

[littleapplecidery.com](http://littleapplecidery.com)

Ron Bixby &amp; Hayley Shine

178 Orchard Lane, Hillsdale, NY 12529

917 287-6339

Hard Cider (fresh organic cider in season) made with NOFA-NY Certified Organic fruit from Little Apple Farm. Visit the open air Orchard Bar, walk through the orchard, learn about apple trees. Family, dog and bicycle friendly.

### Markristo Farm BridleWood Blooms

[markristofarm.com](http://markristofarm.com)

Stosiek Family

Rte 23, Hillsdale, NY 12529

518 752-8448

Mixed organic vegetables and cut flowers, wholesale and retail, special events. 30 years, 30 acres. At the Great Barrington & Copake-Hillsdale Farmers Markets.

### Mayflower Farm

[mayflowerfarm.net](http://mayflowerfarm.net)

Peter &amp; Ellen Maggio

74 Undermountain Rd.

S. Egremont, MA 01258

413 528-4373

Pasture-raised lamb sold at the farm and the Great Barrington Farmers Market. Tanned sheepskins, yarn, roving. Breeding stock available.



**SCAN FOR THE SEARCHABLE MAP OF LOCAL FOOD & FARMS**

Find your way around the Berkshires to shop for fresh, local food at farms and businesses. Visit [www.berkshiregrown.org/food-and-farms-map](http://www.berkshiregrown.org/food-and-farms-map).

**CSA** Community Supported Agriculture (Farm Shares)  
**FS** Farm Store  
**HIP** Healthy Incentives Program  
**PYO** Pick Your Own  
**SNAP** Supplemental Nutrition Assistance Program  
**WIC** Supplemental Nutrition Program for Women, Infants & Children

## Maynard Farms & Orchards **PYO**

[maynardfarmsny.com](http://maynardfarmsny.com)

On Facebook

326 River Rd., Ulster Park, NY 12487

845 331-6908

Hudson Valley farm offering berries, cherries, apricots, plums, peaches, nectarines, pears, grapes, an extensive apple variety selection, full line of vegetables. At Great Barrington Farmers Market and Berkshire Grown Winter Market. Sept and Oct Pick-Your-Own. Call ahead or check online for details.

## Mill River Farm **FS**

[millriverfarm.org](http://millriverfarm.org)

Peter Chapin

282 Brewer Hill Rd., Mill River, MA 01244

413 229-6650, or 917 623-1313

Certified organic, year-round micro greens, pea shoots, salad mix; ginger and turmeric, eggs, pastured chicken, pastured heritage breed Tamworth pork, pastured Thanksgiving turkeys. Wholesale to restaurants, schools, distributors. Visit the Mill River General Store to shop our selection of produce, meat, honey and beeswax products.

## Moon in the Pond Farm **CSA FS**

[mooninthepond.org](http://mooninthepond.org)

Dominic Palumbo

816 Barnum St., Sheffield, MA 01257

Farm: 413 229-3092 Cell: 413 446-3320

Heritage breeds. Grass-fed beef, veal, and lamb. Pastured pork, chicken, and turkey. Organic, heirloom vegetables, herbs, and fruits. Flowers. Sausages, guanciale, pancetta, specialty meats, and bacon. Eggs, honey, maple syrup, specialty syrups. Heirloom dried beans, herbs, mushrooms. Hot Sauce & Chili Oil.

## Mountain Falls Farm **FS**

[mountainfallsfarm.com](http://mountainfallsfarm.com)

Skip & Breeze Hobbs

1800 South Undermountain Rd.

Sheffield, MA 01257

203 558-2707 or 203 972-1130

All-natural pasture-raised Belted Galloway beef; vegetables, salad greens, honey, and maple syrup. Sold at farm by appointment. Wholesale available.

## Mountain Pasture Farm **PYO**

Ray Ellsworth

818 Surriner Rd., Becket, MA 01223

413 623-6455

Certified organically-grown wild blueberries, cultivated blueberries. Organic apples possible, call ahead.

## Mumbet's Freedom Farm

[mumbetsfreedomfarm.com](http://mumbetsfreedomfarm.com)

896 S Undermountain Rd.

Sheffield, MA 01257

A Black and Brown-led cooperative farm and community sanctuary for connection, creativity, education, and wellness. Soon to offer the following resources and experiences: sustainable agriculture, value-added products, CSAs, artist collective, performances; experiential, project-based education for all ages.

## MX Morningstar Farm

**CSA FS HIP SNAP**

[mxmorningstarfarm.com](http://mxmorningstarfarm.com)

Maria Zordan & Max Morningstar

5956 NY-9H, Hudson, NY 12534

508 259-8945

Highest quality certified organic vegetables sold in a vibrant onsite farm store carrying full line of high quality ingredients for all your cooking needs. Meat, dairy, cheeses, pantry and spice staples, and extensive array of produce and fruit. CSA shares available. Wholesale produce available to farms, stores, restaurants, and distributors.

## North Plain Farm **CSA FS SNAP**

[northplainfarm.com](http://northplainfarm.com)

Sean Stanton

342 N. Plain Rd.

Great Barrington, MA 01236

413 429-6598

[sean@northplainfarm.com](mailto:sean@northplainfarm.com)

100% Grass-fed raw milk, 100% grass-fed beef. Pastured organic pork. Non-GMO chicken and eggs. Select seasonal vegetables. Come visit our self-serve farm store, open daily all year long!

## Off the Shelf **CSA**

[offtheshelffarm.com](http://offtheshelffarm.com)

Anna Houston & Rob Perazzo

Mill River, MA 01244

Pastured poultry: chickens in mobile coops graze on fresh grass every day. Selling non-GMO eggs, chicken, 100% grass-fed lamb. Chicken & Egg CSA. Seasonal half and whole lamb boxes. Eggs for wholesale. Lamb, chicken, eggs and egg sandwiches from the grill at the Great Barrington Farmers Market.

## Questing Maize

John Schreiber

[john.schreiber8@gmail.com](mailto:john.schreiber8@gmail.com)

New Marlborough, MA

Sweet corn & squash, pesticide and herbicide free; email for more information.

## Ridgway Farm **CSA FS**

[ridgwayfarm.com](http://ridgwayfarm.com)

Gordon Ridgway

142 Town St., West Cornwall, CT 06796

860 672-5775

Organic vegetables, 100% pure CT maple syrup, beef, pork. Available at farm stand, through CSA, farmers markets, local stores and restaurants, and our online store.

## Riiska Brook Orchard

**FS PYO**

[riiskabrookorchard.com](http://riiskabrookorchard.com)

101 New Hartford Rd.\*

Sandisfield, MA 01255

413 258-4761

Pick-Your-Own blueberries starting July, Sat & Sun 9am – 5pm. PYO apples later in the season. \*GPS users: follow Route 57 until you reach New Hartford Road.

## Robinson Farm

[Robinsonworks@gmail.com](mailto:Robinsonworks@gmail.com)

David Robinson

2299 Main St., Becket, MA 01223

Beefalo, available at farm.

## Rolling Rock Farm

[rollingrocksalt.com](http://rollingrocksalt.com)

Darby Weigel & Tony Carlotto

Sheffield, MA 01257

413 854-5161

We specialize in growing garlic and making finished garlic products such as garlic salts, peppers & blends and also converting it into unique black garlic products.

## Seekonk Tree Farm **FS PYO**

[seekonktreefarm.com](http://seekonktreefarm.com)

Peter Sweet

49 Seekonk Rd.

Great Barrington, MA 01230

413 528-6002

Eggs, maple syrup, berries, garden stakes, wood products and tools. Cut-your-own Christmas trees. Fall-cut flowers, pumpkins & gourds. Wreaths, kissing balls, roping, greens and holiday shop.





**Sky View Farm FS**

Amelia & Will Conklin  
203 Galvin Farm Trail, Sheffield, MA 01257  
413 717-5722

[skyviewfarmsheffield@gmail.com](mailto:skyviewfarmsheffield@gmail.com)

Grass-fed beef sold by the cut in our farm store, or whole/half/quarter cow available by appointment. We raise nutrient-dense food while honoring the integrity of the land, animals, and people.

**Snow Farm CSA**

[Snow-farm.com](http://Snow-farm.com)

Susan Tarasuk & Emily Gallagher

16 South Beech Plain Rd.

Sandisfield, MA 01255

413 717-0579

Vegetable & cut flower CSA's. Professional horticulturists offering gardening services to help enhance your garden and property. Selling at New Marlborough and Sandisfield Farmers Markets.

**Still Point Community Farm FS**

Susan & Bruce Thompson

103 Amenia Union Rd., Amenia, NY 12501

845 789-1062

Strawberries. Garlic heads, bunches, scapes, & seed. Wholesale/retail. Self-serve farm stand June – Oct. Preorder: Rhubarb, Gooseberries, Elderberries.

Hay: 4x4 round bales.

**Sub Edge Farm FS**

[subedgefarm.com](http://subedgefarm.com)

199 Town Farm Rd., Farmington, CT 06032

Organic farm shop open Tues – Sat, 10am – 6pm.

**Swallowbelly Farm**

[swallowbellyfarm.com](http://swallowbellyfarm.com)

New Marlborough, MA

413 464-1379

[swallowbellyfarmers@gmail.com](mailto:swallowbellyfarmers@gmail.com)

Farrow to finish pasture raised pork operation in New Marlborough, MA, focusing on pure bred mangalitsa heritage breed pigs. Whole and half pig boxes available in addition to retail cuts-check website for availability. Piglets available on a first come, first-served basis year-round.

**Taft Farms FS HIP SNAP**

[taftfarmsgb.com](http://taftfarmsgb.com)

Paul K Tawczynski

119 Park St.

Great Barrington, MA 01230

413 528-1515

Year-round farm stand, local and organic meats, cheese, vegetables and fruit. Over 100 varieties of heirloom tomatoes. Over 100 acres of IPM grown vegetables. On-site deli and kitchen making ready to eat entrees and sandwiches from organic ingredients every day. Open daily 8am – 6pm

**Trumpet Hill Farm**

Ken & Jayne Smith

465 Silver St., Sheffield, MA 01257

413 717-8922

Local raw honey, humanely raised pastured beef and chicken.

**Turner Farms Maple Syrup FS**

[turnerfarmsmaplesyrup.com](http://turnerfarmsmaplesyrup.com)

Carla Turner

25 Phillips Rd., S. Egremont, MA 01258

413 528-5710

Maple syrup, maple sugar and maple cotton candy, jams, relishes and pickles at self-serve stand. Large square bales of hay available for fundraisers and craft venues.

**Turtle Tree Biodynamic Seed Initiative**

[turtletreeseed.org](http://turtletreeseed.org)

10 White Birch Rd.

Copake, NY 12516

518 329-3038

Biodynamic & organic vegetable, flower, and herb seeds. Direct to customer via web, phone or paper catalog orders. Wholesale information for retail outlets available upon request.

**Ward's Nursery & Garden Center**

[WardsNursery.com](http://WardsNursery.com)

Eva Ward, Greg Ward, & Sam Ward

600 Main St.

Great Barrington, MA 01230

413 528-0166

Organic vegetable seeds, herbs, & vegetable starts in season. Perennials, trees, and shrubs-many native and Berkshire-grown. Annuals, tropicals, houseplants, seasonal bulbs, holiday decor, garden accessories & organic pest solutions.

**Wild & Cultivated CSA**

Anna Mack

Sheffield, MA 01257

413 441-4257

[anna@wildandcultivated.com](mailto:anna@wildandcultivated.com)

Specialty cut flowers with many unique and hard to find varieties. We offer DIY buckets, a la carte weddings, wholesale and Flower CSA shares. Come August, dahlias are in abundance!

**Windy Hill Farm FS PYO**

[windyhillfarminc.com](http://windyhillfarminc.com)

Dennis & Judy Mareb

686 Stockbridge Rd., Gr Barrington, MA 01230

413 298-3217

PYO and retail blueberries late June – mid-Aug. PYO and retail apples mid-Aug – Nov. Fresh-pressed unpasteurized sweet cider Sept – Dec. Extensive selection of Berkshire-grown fruit trees and small fruits. Our own Windy Hill-grown Christmas trees available after Thanksgiving. Fresh cut winterberry stems starting in late Oct. Fully operating nursery and garden shop. Open daily Apr – Dec, 9am – 5pm.

**Wolfe Spring Farm**

June, Jim & Kaileen Wolfe

946 Hewins St., Sheffield, MA 01257

Wholesale asparagus.

**Woven Roots Farm & Education Center CSA FS SNAP**

[wovenrootsfarm.com](http://wovenrootsfarm.com)

Jen & Pete Salinetti

12 McCarty Rd., Tyngingham, MA 01264

413 243-6122

Nurturing the land that nourishes our community through hand-scale, ecological farming practices, community membership, and education. CSA includes vegetables, herbs, cut flowers, eggs, and poultry. Equitable sliding scale for CSA and community events. New farm store!

**Woven Stars Farm FS**

[wovenstarsfarm.com](http://wovenstarsfarm.com)

Elizabeth & Emerson Martin

Farmstore: 52 Winter Hill Rd.,

Ghent, NY 12075

508 254-0833

Self-serve farm store offering a variety of grass-fed, organic meats and pasture-raised eggs. Our products include beef, pork, chicken, lamb, goat and duck.



**SCAN FOR THE SEARCHABLE MAP OF LOCAL FOOD & FARMS**

Find your way around the Berkshires to shop for fresh, local food at farms and businesses. Visit [www.berkshiregrown.org/food-and-farms-map](http://www.berkshiregrown.org/food-and-farms-map).

# Farm Stores

Please visit Farmers & Growers pages for more information on food and products sold at the stands and stores. Some stands are seasonal, so check websites or call.

**HIP** Healthy Incentives Program  
**SNAP** Supplemental Nutrition Assistance Program

## NORTH COUNTY

### Ayrhill Farms

[On Facebook](#)

45 Henry Wood Rd., Cheshire, MA 01225  
413 743-1474

### Berle Farm

[berlefarm.com](#)

319 Beechwood Rd., Hoosick, NY 12090  
518 686-3249

### Colonial Alpacas

[colonialalpacas.com](#)

341 Luce Rd., Williamstown, MA 01267  
413 597-1604

### Cricket Creek Farm

[cricketcreekfarm.com](#)

1255 Oblong Rd., Williamstown, MA 01267  
413 458-5888

### East Mountain Farm **SNAP**

[eastmountainfarm.com](#)

582 Henderson Rd., Williamstown, MA 01267  
413 281-7291

### Elderberry Springs

[elderberrysprings.com](#)

806 Taconic Trail, Petersburg, NY 12138  
518 659-1411

### Elmartin Farm

[elmartinfarm.com](#)

594 Windsor Rd., Cheshire, MA 01225  
413 388-3990 or 413 281-4320

### Full Well Farm **HIP SNAP**

[fullwellfarm.com](#)

313 East Rd., Adams, MA 01220  
413 441-1638

### Jennings Brook Farm

[farmfresh.org](#)

83 Beach Hill Rd., New Ashford, MA 01237  
413 458-8438

### Laughing Earth

[laughingearth.farm](#)

3842 NY 2, Cropseyville, NY 12052  
518 821-8449

### Many Forks Farm **HIP SNAP**

[manyforksfarm.com](#)

1360 River Rd., Clarksburg, MA 01247  
413 281-1814

### Starry Ridge Farm

[On Facebook](#)

18914 Route 22, Petersburg, NY 12138  
starryridgefarm@gmail.com

### Sweet Brook Farm & Sweet Brook Beef Company

[sweetbrookfarms.com](#)

207 Woodcock Rd., Williamstown, MA 01267  
413 217-0092

### the GOAT PROJECT

[thegoatproject.net](#)

1107 Pleasant Valley Rd., Bennington, VT 05201  
802 442-1107

## CENTRAL COUNTY

### Appletree Hill Organic Farm

3210 Rte. 43, Hancock, MA 01237

413 458-3933

### Bartlett's Orchard

[bartlettsorchard.com](#)

575 Swamp Rd., Richmond, MA 01254  
413 698-2559

### The Berry Patch

[theberrypatch.net](#)

15589 State Route 22  
Stephentown NY 12168  
518 733-1234

### Brattle Farm

[brattlefarm.com](#)

600 Williams St., Pittsfield, MA 01201  
413 822-1516

### Elzires Acre Goat Milk Soap

[GetGoatSoap.com](#)

111 Wheeler Rd., Princeton, MA 01541  
978 660-6673

### Flynn Farm

610 Tamarack Rd., Pittsfield, MA 01201

413 329-7482

### Forthill Farm

325 Fort Hill Ave., Pittsfield, MA 01201

413 822-3342

### Gray Raven Farm

[grayravenfarm.net](#)

6 Johnny Cake Hill Rd.,  
Middlefield, MA 01243  
413 822-0603

### Green Heron Farm

[On Instagram](#)

(2 Stands) 452 Washington Rd.  
Hinsdale, MA 01235  
341 Elm St., Pittsfield, MA 01201  
413 212-7237

### High Lawn Farm

[highlawnfarm.com](#)

535 Summer St., Lee, MA 01238  
413 243-0672

### Holiday Brook Farm

[holidaybrookfarm.com](#)

100 Holiday Cottage Rd., Dalton, MA 01226  
413 684-0444

### Ioka Valley Farm

[iokavalleyfarm.com](#)

3475 Rt. 43, Hancock, MA 01237  
413 738-5915

### Jaeschke's Orchard **HIP SNAP**

[on Facebook](#)

736 Crane Ave., Pittsfield, MA 01201  
413 443-7180

### Justamere Tree Farm

[justameretreefarm.com](#)

248 Patterson Rd., Worthington, MA 01098  
413 238-5902

### Kinderhook Creek Farm

5168 So. Stephentown Road (Corner of  
Rensselaer County Rte. 27 and Goold Rd., 3.5 mi  
from US Rte. 20), Stephentown, NY 12168  
518 733-5137

### Lakeview Orchard **HIP SNAP**

[lakevieworchard.com](#)

94 Old Cheshire Rd., Lanesborough, MA 01237  
413 448-6009

### Lion's Tooth Farm

[lionstoothfarm.com](#)

1288 Old Route 9, Windsor, MA 01270  
413 464-2863

### Mycoterra Farm **HIP SNAP**

[mycoterrafarm.com](#)

75 Stillwater Rd., South, Deerfield MA 01373  
413 397-3654

### Natural Roots Farm **HIP SNAP**

[naturalroots.com](#)

888 Shelburne Falls Rd., Conway, MA 01341  
413 369-4269

### Red Hawk Farm

1031 State Rd., Richmond, MA 01254

RedHawkFarm2015@gmail.com

### Red Shirt Farm **HIP SNAP**

[redshirtfarm.com](#)

60 Williamstown Rd., Lanesboro, MA 01237  
413 822-9250

### Rock and Root Farm

[rockandrootfarm@gmail.com](#)

735 N Main St., Lanesborough, MA 01237  
978 877-7924

### Samascott's Garden Market

[samascott.com](#)

65 Chatham St., Kinderhook NY 12106  
518 758-9292

### Second Drop Farm

[On Instagram.com](#)

551 North Main St.  
Lanesborough, MA 01237  
413 822-0355



**Square Roots Farm SNAP**[squarerootsfarm.org](http://squarerootsfarm.org)95 Old Cheshire Rd., Lanesborough, MA 01237  
413 446-1446**Sweet Birch Herbs & Full Moon Ghee Farm Stand**[Sweetbirchherbs.com](http://Sweetbirchherbs.com)[Fullmoonghee.com](http://Fullmoonghee.com)686 Creamery Rd., Ashfield, MA 01330  
413 695-5968**Three Maples Market Garden**[threemaplesmarketgarden.com](http://threemaplesmarketgarden.com)98 State Line Rd., W. Stockbridge, MA 01266  
413 329-8601**Whitney's Farm Market and Garden Center**[whitneysfarm.com](http://whitneysfarm.com)1775 South State Rd., Cheshire, MA 01225  
413 442-4749**YundWell Pastured Poultry**[YundWell.com](http://YundWell.com)1715 County Route 5, Canaan, NY 12029  
518 929-5394**SOUTH COUNTY****Beavertides Farm**[Beavertidesfarm.com](http://Beavertidesfarm.com)

44 Cobble Rd., Falls Village, CT 06031

**Chaseholm Farm**[chaseholmfarm.com](http://chaseholmfarm.com)115 Chase Rd., Pine Plains, NY 12567  
518 339-2071**Dancing Greens Farm**[dancing-greens.com](http://dancing-greens.com)214 Blue Hill Rd., Great Barrington, MA 01230  
914 393-6338**Dandelion Hill Farm SNAP**[www.dandelionhillfarms.com](http://www.dandelionhillfarms.com)204 Hulett Hill Rd., Sheffield, MA 01257  
413 429-7898**Et Cetera Farm**936 County Route 21, Hillsdale, NY 12075  
518 672-4250**The Farm at Miller's Crossing SNAP**[farmatmillerscrossing.com](http://farmatmillerscrossing.com)The Barn at Miller's Crossing  
170 Route 217, Hudson, NY 12534  
518 851-2331**Farm Girl Farm**[farmgirlfarm.com](http://farmgirlfarm.com)342 North Plain Rd., Great Barrington, MA 01230  
413 262-8707**Fern Farm**[tinyurl.com/fernfarm](http://tinyurl.com/fernfarm)6 Cross Rd., Mount Washington, MA 01258  
[fernfarmlc@gmail.com](mailto:fernfarmlc@gmail.com)**Gaetano's Organic Farm**453 Main St., Becket, MA 01223  
413 329-3862**Grimaldi Farm**[grimaldifarmstore.com](http://grimaldifarmstore.com)22 Old Talerico Rd., Ghent, NY 12075  
518 929-3420**Hawk Dance Farm**[On Facebook](#)[hawkdancefarm.com](http://hawkdancefarm.com)362 Rodman Rd., Hillsdale, NY 12529  
518 325-1430**Hawthorne Valley Farm SNAP**[hawthornevalleyfarm.org](http://hawthornevalleyfarm.org)327 County Route 21C, Ghent, NY 12075  
518 672-7500**Julie the Garden Fairy at Willow View Farm**[On Facebook & Instagram](#)

1321 Sheldon Street,

West Suffield, CT 06093

860 670-3089

**Little Apple Farm and Cidery**[littleapplecidery.com](http://littleapplecidery.com)178 Orchard Lane, Hillsdale, NY 12529  
917 287-6339**Mill River Farm**[millriverfarm.org](http://millriverfarm.org)282 Brewer Hill Rd., Mill River, MA 01244  
413 229-6650**Moon in the Pond Farm**[mooninthepond.org](http://mooninthepond.org)816 Barnum St., Sheffield, MA 01257  
Farm: 413 229-3092 Cell: 413-446-3320**Mountain Falls Farm**[mountainfallsfarm.com](http://mountainfallsfarm.com)1800 South Undermountain Rd.  
Sheffield, MA 01257

203 558-2707 or 203 972-1130

by appointment.

**MX Morningstar Farm**[mxmorningstarfarm.com](http://mxmorningstarfarm.com)5956 NY-9H, Hudson, NY 12534  
518 918-7774**North Plain Farm SNAP**[northplainfarm.com](http://northplainfarm.com)342 N. Plain Rd., Great Barrington, MA 01236  
413 429-6598**Ridgway Farm**[ridgwayfarm.com](http://ridgwayfarm.com)142 Town St.  
West Cornwall, CT 06796  
860 672-5775**Riiska Brook Orchard**[riiskabrookorchard.com](http://riiskabrookorchard.com)

101 New Hartford Rd., Sandisfield, MA 01255\*

\*GPS users: follow Route 57 until you reach  
New Hartford Road.

413 258-4761

**Seekonk Tree Farm**[seekonktreefarm.com](http://seekonktreefarm.com)49 Seekonk Rd., Great Barrington, MA 01230  
413 528-6002**Sky View Farm**[skyviewfarmsheffield@gmail.com](mailto:skyviewfarmsheffield@gmail.com)203 Galvin Farm Trail, Sheffield, MA 01257  
413 717-5722**Still Point Community Farm**

103 Amenia Union Rd., Amenia, NY 12501

845 789-1062

**Sub Edge Farm**[subedgefarm.com](http://subedgefarm.com)

199 Town Farm Rd., Farmington, CT 06032

**Taft Farms HIP SNAP**[taftfarmsgb.com](http://taftfarmsgb.com)119 Park Street North,  
Great Barrington, MA 01230  
413 528-1515**Turner Farms Maple Syrup**[turnerfarmsmaplesyrup.com](http://turnerfarmsmaplesyrup.com)25 Phillips Rd., S. Egremont, MA 01258  
413 528-5710**Windy Hill Farm**[windyhillfarminc.com](http://windyhillfarminc.com)686 Stockbridge Rd.  
Great Barrington, MA 01230  
413 298-3217**Woven Roots Farm & Education Center SNAP**[wovenrootsfarm.com](http://wovenrootsfarm.com)12 McCarty Rd., Tyringham, MA 01264  
413 243-6122**Woven Stars Farm**[wovenstarsfarm.com](http://wovenstarsfarm.com)52 Winter Hill Rd., Ghent, NY 12075  
508 254-0833

Caretaker Farm, Williamstown, MA

# Food & Lodging



Gedney Farm, New Marlborough, MA

**C** Catering  
**G** Grocery  
**L** Lodging  
**R** Restaurant  
**SNAP** Accepts SNAP/EBT  
**TKO** Take Out

**The Break Room**  
**at Greylock WORKS** **R TKO**  
[thebreakroomgw.com](http://thebreakroomgw.com)  
508 State Rd., North Adams, MA 01247  
413 346-4035

**Wild Oats Market** **C G SNAP**  
[wildoats.coop](http://wildoats.coop)  
320 Main St., Williamstown, MA 01267  
413 458-8060

**CRUST** **R TKO**  
[crustpz.com](http://crustpz.com)  
505 East St., Ste C, Pittsfield, MA 01201  
413 822-1536

**Guido's Fresh Marketplace**  
**G R SNAP**  
[guidosfreshmarketplace.com](http://guidosfreshmarketplace.com)  
1020 South St., Pittsfield, MA 01201  
413 442-9912

## NORTH COUNTY

**The Airport Rooms @ TOURISTS**  
[touristswelcome.com](http://touristswelcome.com)  
862 State Rd., North Adams, MA 01247  
413 347-4995

**Lickety Split at MASS MoCA** **R**  
[licketysplitatmassmoca.com](http://licketysplitatmassmoca.com)  
1010 Mass Moca Way,  
North Adams, MA 01247  
413 346-4560

**Mezze Bistro + Bar / Mezze Events**  
**C R TKO**  
[mezzerestaurant.com](http://mezzerestaurant.com)  
[mezzecatering.com](http://mezzecatering.com)  
777 Cold Spring Rd.  
Williamstown, MA 01267  
Bistro: 413 458-0123 Events: 413 458-8745  
Coming soon Mezze Guesthouse.

## CENTRAL COUNTY

**Alta Restaurant & Wine Bar** **R**  
[altawinebar.com](http://altawinebar.com)  
34 Church St., Lenox, MA 01240  
413 637-0003

**Berkshire Mountain Bakery Pizza Café**  
**G C R TKO**  
[berkshiremountainbakery.com](http://berkshiremountainbakery.com)  
180 Elm St., Pittsfield, MA 01201  
413 464-9394

**Café at Hancock Shaker Village**  
**R TKO**  
[hancockshakervillage.org](http://hancockshakervillage.org)  
1843 W Housatonic St.,  
Pittsfield, MA 01201  
413 499-8760

## SOUTH COUNTY

**Barrington Brewery & Restaurant**  
**R TKO**  
[barringtonbrewery.com](http://barringtonbrewery.com)  
420 Stockbridge Rd.  
Great Barrington, MA 01230  
413 528-8282

**Berkshire Food Co-op**  
**C G R SNAP TKO**  
[berkshire.coop](http://berkshire.coop)  
34 Bridge St., Great Barrington, MA 01230  
413 528-9697

**Berkshire Mountain Bakery Pizza Café**  
**C R G TKO**  
[berkshiremountainbakery.com](http://berkshiremountainbakery.com)  
367 Park St., Housatonic, MA 01236  
413 274-1313



**cafe ADAM R TKO**
[cafeadam.org](http://cafeadam.org)

420 Stockbridge Rd., Ste 3  
Great Barrington, MA 01230  
413 528-7786

**Farm Country Soup C GR TKO**
[farmcountrysoup.com](http://farmcountrysoup.com)

389 Stockbridge Rd.  
Great Barrington, MA 01230  
413 528-0040

**Gedney Farm CLR**
[gedneyfarm.com](http://gedneyfarm.com)

34 Hartsville New Marlboro Rd.  
New Marlborough, MA 01230  
413 229-3131

**Guido's Fresh Marketplace G SNAP**
[guidosfreshmarketplace.com](http://guidosfreshmarketplace.com)

760 Main St.  
Great Barrington, MA 01230  
413 528-9255

**Mama Lo's R TKO**
[mommalosbbq.com](http://mommalosbbq.com)

In the Atrium at 284 S Main St., Suite 9  
Great Barrington, MA 01230  
518 598-4684

**Marjoram and Roux R TKO**
[marjoramandroux.com](http://marjoramandroux.com)

47 Railroad St.  
Great Barrington, MA 01230  
413 528-1223

**Mill River General Store G**
[themillrivergeneralstore.com](http://themillrivergeneralstore.com)

10 Mill River-Great Barrington Rd.  
Mill River, MA 01244  
413 229-2663

**Naji's Mediterranean Cuisine**
**CR TKO**
[najismediterraneancuisine.com](http://najismediterraneancuisine.com)

401 Stockbridge Rd., Ste 2  
Great Barrington, MA 01230  
413 528-5540

**Old Inn on the Green L R TKO**
[oldinn.com](http://oldinn.com)

134 Hartsville New Marlboro Rd.  
New Marlborough, MA 01230  
413 229-7924

**Once Upon a Table R TKO**
[onceuponatablestockbridge.com](http://onceuponatablestockbridge.com)

36 Main St., The Mews  
Stockbridge, MA 01266  
413 298-3870

**The Old Mill C R TKO**
[oldmillberkshires.com](http://oldmillberkshires.com)

53 Main St., South Egremont, MA 01258  
413 528-1421

**Pleasant and Main Café**
**R TKO**
[pleasantandmain.com](http://pleasantandmain.com)

1063 Main St., Housatonic, MA 01236  
413 274-6303

**Prairie Whale R TKO**
**On Facebook**

178 Main St.  
Great Barrington, MA 01230  
413 528-5050

**Random Harvest**
**CGR TKO**
[randomharvestmarket.com](http://randomharvestmarket.com)

1785 State Route 23  
Craryville, NY 12521  
518-325-9895

**SoCo Creamery R TKO**
[sococreamery.com](http://sococreamery.com)

955 Main St.  
Great Barrington, MA 01230  
413 446-1220

**Southfield Store R TKO**
[southfieldstore.com](http://southfieldstore.com)

163 Norfolk Rd.  
Southfield, MA 01259  
413 229-5050



Rena's Café, Guido's Fresh Marketplace, Great Barrington, MA (left), Once Upon a Table, Stockbridge, MA (right)

# BERKSHIRE GROWN'S

## Farm to Food Access Programs

While food and farming are inextricably linked to the Berkshires, food access is a timely topic that existed long before the pandemic. To keep farmers farming and extend access to food that's locally sourced to more residents around the county, Berkshire Grown has two programs: Share the Bounty and Farm to Food Access.

These programs establish purchasing contracts with local farmers for vegetables, fruit, meat, eggs and milk. They also build collaborative partnerships amongst local nonprofits. While Berkshire Grown purchases and aggregates crops at our refrigerated storage facility, Berkshire Bounty sends out their volunteers to deliver the fresh local food to food access sites across Berkshire County. Together these and other partners work to get food to all members of our community, regardless of their income level. And, in the fall of 2023, a collaborative partnership managed by the Berkshire Regional Planning Commission will roll out the Berkshire Mobile Farmers Market, with two vehicles driving to underserved areas of the county where access to fresh local food is limited. Farmers benefit from these food access programs, too. In the words of a local farmer:

**“Food access is a complicated beast and as a farmer it's not always easy to navigate how we can make an impact. Berkshire Grown's food access keeps farmers in business as well as chipping away at local barriers to food access. We are honored to be a part of this program.”**

Several shoppers at a local food pantry spoke about the benefits of locally-sourced food while perusing piles of carrots and sacks of onions provided by local farmers. In particular they appreciate that it is fresher, tastes better, and lasts longer than produce from the grocery store.

Purchasing food from local farms is crucial to building a resilient food system that begins with the sowing of a single seed. “We appreciate that Berkshire Grown understands the need for farmers to be paid the full value of their crops,” says a Berkshire vegetable farmer.

**“Working with Berkshire Grown and other local organizations aligns with our mission of providing our community members with fresh produce regardless of their finances while remaining a viable business. It's a way for us to build food security without sacrificing our revenue — because in the end, farms staying afloat is crucial for food security.”**





## NORTH COUNTY

**Al Nelson Friendship Center**

45 Eagle Street, North Adams  
413 664-0123

Wednesdays, 10:00am – 2:00pm

Friends physically unable to get to the food pantry, call on Wednesdays between 10:00am – 2:00pm to set-up a delivery which will take place on Thursdays, 10:00am – noon.

**North Adams COA Brown Bag**

Distribution at Spitzer Center  
116 Ashland Street, North Adams  
413 662-3125

4th Friday of every month  
12:30pm – 1:30pm

**Williamstown Food Pantry**

St. Patrick & St. Raphael Parish  
53 Southworth Street, Williamstown  
413 458-4946 x11 or 413-458-3149  
1st & 3rd Wednesdays of each month  
(Holidays may be different)  
9:00am – 12Noon  
Drive or walk-thru

**Stephentown, NY Food Pantry**

Stephentown Federated Church  
1513 Garfield Road, (County Road 26),  
Stephentown, NY  
518 487-8606  
Saturdays, 9:00am – 11:00am  
Available weekly from your car

## PITTSFIELD

**Berkshire Dream Center**

(Held at the Morningside Baptist Church)  
475 Tyler Street, Pittsfield  
413 522-3495  
Tuesdays, 2:30pm – 3:30pm

**Berkshire Veterans' Outreach Center**

505 East Street, Suite 103, Pittsfield  
413 448-6052  
Thursdays, 11:00am – 1:00pm

**Christian Assembly Church**

850 Williams Street, Pittsfield  
413 442-1495  
Wednesdays & Fridays, 10:00am – 1:00pm

**Christian Center Client Choice**

193 Robbins Avenue, Pittsfield  
413 443-2828  
Mondays – Fridays, 9:00am – 2:00pm

**First Baptist Church**

88 South Street, Pittsfield  
413 445-4539  
Tuesdays, 10:30am – 12:30pm

**First United Methodist Church**

55 Fenn Street, Pittsfield  
(Use Fenn Street entrance)  
413 499-0866  
Tuesdays, 4:00pm – 5:30pm

**St. Joseph's Church Parish Center**

414 North Street, Pittsfield  
413 445-5789  
Wednesdays, 8:30am – 10:00am

**St. Mark's Church**

400 West Street, Pittsfield  
413 447-7510  
Last two Fridays of each month,  
9:00 – 11:00am

**The Salvation Army**

298 West Street, Pittsfield  
413 442-0624  
Mondays, Tuesdays, and Wednesdays,  
12:30pm – 3:00pm

**South Community Food Pantry**

110 South Street, Pittsfield  
413 464-8042, ext. 19  
Wednesdays & Thursdays, 7:30am – 11:00am  
Wednesdays, 4:30pm – 5:30pm

BECKET, DALTON,  
HINSDALE &  
LANESBORO**Becket Federated Church Parish House**

3381 Main Street  
Becket  
413 841-1701  
1st & 3rd Saturdays of each month  
9:00am – 11:00am

**Dalton United Methodist Church**

755 Main Street, Dalton  
413 684-0521  
Tuesdays, 4:00pm – 6:00pm

**Hinsdale Food Pantry**

Located at Hinsdale Trading Company  
Parking Lot  
371 Old Dalton Road  
Hinsdale  
413 655-2670  
Thursdays, 10:00am – 11:00am

**American Legion**

Located in the old school house in  
Berkshire Village  
144 Old State Road  
Lanesboro  
413 442-1025  
Fridays, 9:00 – 11:00am

## SOUTH COUNTY

**Lee Food Pantry**

45 Railroad Street, Lee  
413 644-0022  
Saturdays, 10:00am – 12Noon

**Lenox Ecumenical Food Pantry**

Located at the United Methodist  
Church of Lenox  
6 Holmes Road, Lenox  
413 445-5918 or 413 822-8673  
Saturdays, 10:00am – 11:00am

**Monterey Pantry Pickup**

Held at the Meetinghouse basement  
449 Main Road, Monterey  
Call 413 429-4254 with questions or to  
schedule a home delivery for Monterey  
homebound individuals. Monterey area  
residents can do in-person shopping.  
Saturdays, 10:00am – 11:00am

**Otis Food Pantry**

1 North Main Road, Otis  
otisfoodpantry@gmail.com  
On Facebook at: Otis Food Pantry  
Wednesdays, 9:00am – 11:00am

**Peoples Pantry**

5 Taconic Avenue at St. James Place  
(across from CVS)  
Great Barrington  
www.thepeoplespantrygb.org  
Mondays, 4:00pm – 5:30pm  
Thursdays, 10:00am – 12:30pm

**Sheffield Food Assistance**

Held at Old Parish Church  
125 Main Street, Sheffield  
413 229-2624  
Mondays, 9:00am – 10:00am



Grants and Business Training  
MassGrown Exchange  
The Farm & Market Report  
The MassGrown Map

Learn more at [www.mass.gov/agr](http://www.mass.gov/agr)



SCAN FOR A LIST OF FOOD PANTRIES AND MEAL SITES

Program schedules can change without notice. Call locations to confirm times and requirements.

# Specialty Producers



*Sweet Somerby Farm, West Stockbridge, MA*

## **Auntie Elsie's Oatmeal Crisps**

[auntieelsies.com](http://auntieelsies.com)

40 Daniel Shays Hwy., Unit 4  
Belchertown, MA 01007  
413 406-6207

Thin gourmet oatmeal cookies with a unique delicate crisp. We hand-craft our oatmeal treats using simple, natural and organic ingredients, sourced locally whenever possible. Offered in Classic, Ginger, Cranberry, and Gluten free. Online store and wholesale available.

## **Baked! Pastries & More**

[On Facebook](#)

63 Orlando Ave.

Pittsfield, MA 01201

To order please call or text 413 418-8996  
Residential bakery. Fresh handmade international breads and pastries right here in the Berkshires! You can find us at markets or order from us directly.

## **Barrington Coffee Roasting Co.**

[barringtoncoffee.com](http://barringtoncoffee.com)

800 528-0998

Farm direct coffees roasted to order in the Berkshires.

## **Battenkill Wholesome Foods**

[battenkillwholesomefoods.com](http://battenkillwholesomefoods.com)

PO Box 1002, Manchester Ctr., VT 05255  
802 375-2698

Gluten-free, high energy products – energy bars, crumble topping, cereals. Available online and in local stores.

## **Berkshire Cider Project**

[berkshire-cider.com](http://berkshire-cider.com)

508 State Rd., North Adams MA, 01247  
(located @Greylock Works)  
413 409-6058

Our ciders are dry, sparkling, naturally gluten-free and contain zero sugar. Berkshire Cider Project partners with local orchards to source fresh juice, then ferments slowly in small batches, right here in the Berkshires at our facility at Greylock WORKS.

## **Berkshire Mountain Distillers Farm Distillery**

[berkshiremountaindistillers.com](http://berkshiremountaindistillers.com)

356 South Main St., Sheffield, MA 01257  
413 229-0219

Tasting room and educational tours throughout the facility and gardens. Offering fresh herbs and botanicals for cocktails and infusions. Custom-labeled gins for restaurants.

## **Big Elm Brewing**

[bigelmbeer.com](http://bigelmbeer.com)

[On Facebook](#)

65 Silver St., Sheffield, MA 01257  
413 229-2348

Production brewery for taproom and handcrafted ales and lagers. Keg and can beers available throughout MA and western CT. Taproom at 389 Stockbridge Road, Great Barrington.

## **BOLA Granola**

[bolagranola.com](http://bolagranola.com)

10 Crissey Rd., Gt. Barrington, MA 01230  
413 528-4745

Fresh, healthy and handmade since 2008. Original granola, Gluten Free Organic, and Barely Sweet Gluten-Free made with local maple syrup. Plus BOLA bars: Gluten-Free: Original, Cranberry and Espresso. Available online and through our retail partners.

## **Chris's Kitchen**

[On Facebook](#)

413 884-5217

[Jelly8899@aol.com](mailto:Jelly8899@aol.com)

Selling baked goods, cookies and bars, pies and cakes by the slice. Plus delightful seasonal favorites such as doughnuts and pumpkin pie.

## **Creature Bread LLC**

[creaturebread.com](http://creaturebread.com)

[creaturebread@gmail.com](mailto:creaturebread@gmail.com)

Family-run bread company producing naturally leavened bread in southern Berkshire County. Available throughout the region, visit [creaturebread.com/find-bread](http://creaturebread.com/find-bread) for a list of stores.

## **Highland Ledge Farm**

[thehighlandledge.com](http://thehighlandledge.com)

[highlandledgefarm@yahoo.com](mailto:highlandledgefarm@yahoo.com)

Emily and Ed Groner

413 344-5102 or 413 749-2699

Home-made, natural and unique jams, mustards, syrups and vinegars.

## **Jacuterie**

[jacuterie.com](http://jacuterie.com)

European inspired charcuterie, salami, sausages, and specialty bacons. Made locally in upstate NY in small batches. Sold at retail grocers and Farmers Markets throughout the region.

## **les collines**

[thelifepicked.com](http://thelifepicked.com)

609 915-1453

Locally sourced, seasonally inspired, small batch jelly and preserves produced in Hillsdale, NY. Sold at many local 'farm and business' supporting markets in NY, MA, CT & NJ. Online sales, wholesale, and shipping available.

## **No Comply Foods**

[On Instagram](#)

[nocomplyfoods@gmail.com](mailto:nocomplyfoods@gmail.com)

Small batches of Golden Milk and Hot Honey. Hot or iced Golden Milk drinks including iced Chai Golden Milk are all made to order with No Comply Golden Milk base and Chai. Golden Milk base is available in jars make at home. Watch for Pop-ups and at the Great Barrington and Berkshire Grown Winter Farmers Markets.

## **R&G Cheese**

[rgcheese.com](http://rgcheese.com)

518 436-7603

Producers of quality artisan camemberts, chevres, and cheeses made with unique ingredients including fennel pollen, truffles, exotic pepper blends, and more. Available at fine grocers and farmers markets in the Berkshires and surrounding region.

## **Sidehill Farm Yogurt**

[sidehillfarm.net](http://sidehillfarm.net)

[info@sidehillfarm.net](mailto:info@sidehillfarm.net)

58 Forget Rd., Hawley, MA 01339  
413 339-0033

Certified organic yogurt, cultured sour cream, and aged cheddar cheeses made from the milk of grass-fed cows. All milk sourced from certified organic, grass-fed family run dairies in the Berkshire region. Visit our website for retail outlets; call or email for wholesale information.

## **Sweet Birch Herbals & Full Moon Ghee**

[sweetbircherbals.com](http://sweetbircherbals.com), [fullmoonghee.com](http://fullmoonghee.com)

[sweetbircherbals@gmail.com](mailto:sweetbircherbals@gmail.com)

686 Creamery Rd., Ashfield MA 01330

413 695-5968

Holistic health company featuring locally grown and sustainably wild crafted herbs, holistic health consulting, workshops, and ghee made on the full moon. Wholesale available.



## **All Ways Essence**

[ankhhouse.com](http://ankhhouse.com)

518 720-7755

Homemade whipped body butter (shea butter from, Ghana, West Africa), aromatherapy, essential oils, holistic education, research, consulting and more. Orders at [jcwilliams@ankhhouse.com](mailto:jcwilliams@ankhhouse.com).

## **Bee Resonance Project**

[beeresonanceproject.com](http://beeresonanceproject.com)

Asher Silverwolff

860 671-7772

Professional beekeeping management company operating in the Hudson Valley and the Berkshires. Offering installations and care for apiaries on behalf of clients and engaging community organizations to spread the importance of honey bees and pollinators. We acknowledge the systematic oppression of people of color still going on today particularly in the agriculture industry and are working to support safe spaces for BIPOC to train as beekeepers and establish apiaries. Bees and equipment sales.

## **Berkshares, Inc.**

[berkshares.org](http://berkshares.org)

Berkshares Local Currency for the Berkshire region, BerkShares used at hundreds participating businesses in the region as cash, keep our money in local circulation!

## **Berkshire Agricultural Ventures**

[berkshireagriculturalventures.org](http://berkshireagriculturalventures.org)

314 Main St., Ste 202

Great Barrington, MA 01230

Supporting the development and viability of local farms and food businesses to build a thriving and equitable local food economy.

## **Berkshire Ambulatory Veterinary Services**

[maitredvm@gmail.com](mailto:maitredvm@gmail.com)

Yoanna Maitre, DVM

413 637-2223

Providing medical care for farm animals in Berkshire County and neighboring New York. Emphasizing preventative care, client education, and sustainable agriculture.

## **BlueSkyeWellness**

[blueskyewellness.com](http://blueskyewellness.com)

Kay and Erin Judge

413 242-4069

Handcrafted soap, body butter bars and lip balm made with honey and beeswax from our bees, tick/bug spray, aromatherapy, body care products, hand tied brooms, upcycled crafts, classes and consultations.

## **Country Club of Pittsfield**

[ccpittsfield.org](http://ccpittsfield.org)

639 South St., Pittsfield, MA 01201

413 447-8510

## **Earthly Remedies**

by erin Herb Farm

[earthlyremediesbyerin.com](http://earthlyremediesbyerin.com)

Erin Ethier, Owner and Herbalist

490 Lowe Rd., Cobleskill, NY 12043

518 534-3003

Herbal wellness products, plant medicine products, botanical skincare and body care products, herbal consultations.

## **Farmsteads for Farmers**

[BerkshireCommunityLandTrust.org](http://BerkshireCommunityLandTrust.org)

[office@berkshirecommunitylandtrust.org](mailto:office@berkshirecommunitylandtrust.org)

An initiative of the Berkshire Community Land Trust in partnership with Berkshire Agricultural Ventures and Berkshire Grown. The purpose of the Fund is to support secure, long-term access to land for farmsteads for small-scale farmers, while holding the land with the Berkshire Community Land Trust. Donations of land or money are encouraged.

## **Greenagers, Inc.**

[greenagers.org](http://greenagers.org)

62 Undermountain Rd.

South Egremont, MA 413 644-9090

Environmental Stewardship programs for youth and young adults.

## **Katy Sparks Culinary Consulting**

[katysparks.com](http://katysparks.com)

[culinconsult@gmail.com](mailto:culinconsult@gmail.com)

Great Barrington, MA

Culinary Consultant sourcing local and sustainable foods to design, develop and deliver the unique food program that clearly communicates what your food business is all about.

## **Marty's Local**

[martyslocal.com](http://martyslocal.com)

10 Greenfield Rd.

South Deerfield, MA 01373

413 347-9401

Wholesale food distributor specializing in source-identified local and regional foods. Local produce, flours and grains, dairy, meats, cheeses, and specialty foods delivered daily throughout Western MA, Southern VT, and the Hudson Valley.

## **Mt. Greylock Campsite Park**

[mtgreylockcampsitepark.com](http://mtgreylockcampsitepark.com)

15 Scott Rd., Lanesborough, MA

413-447-9419

Family owned and operated campground located at the base of Mount Greylock. Tents and RVs up to 40' welcome. RV campsites have water, electric, and grey water disposal. Black water station/honey wagon on site. Deluxe tent campsites have water and electric. Heated pool, Activity Center, fully equipped bathhouses, laundry, fishing, playground, camp store and activities. Group camping.

## **Nature Works**

**Organic Land Care Services**

[natureworkslandcare.com](http://natureworkslandcare.com)

Richard Lassar

900 Pleasant St., Lee, MA 01238

413 325-1101

Ecological landscape design, installation, and maintenance in the tri-state region.

## **Nature's Turn**

**Schoolhouse Gardens**

[naturesturn.org](http://naturesturn.org)

413 528-1335

Environmental Educator/ Site Consultations for new and existing gardens. Wild lands assessments.

## **Roots Rising**

[rootsrising.org](http://rootsrising.org)

PO Box 1805, Pittsfield, MA 01202

413 344-0816

Empowering youth and building community through food and farming.

## **Second Chance Composting**

[secondchancecomposting.com](http://secondchancecomposting.com)

[info@secondchancecomposting.com](mailto:info@secondchancecomposting.com)

413-207-2745

Family and locally owned. Offers drop-off off, pickup, hauling, and processing of food scraps and bulk organic matter including leaves, woodchips, sawdust, and manure. \$2.30 per week Residential Composting Program. Commercial food scrap collection including restaurants, schools, hotels, supermarkets, and businesses available with weekly pick up using 35 gallon totes provided and rinsed every time. Commercial scale & events pick up and hauling services. Other partnerships involve landscapers, tree work/firewood, farms and more. Building community, sustainability, and our future together.

## **SvenFish**

[svenfish.com](http://svenfish.com)

866 786-3774

25 Powdermill Rd., Acton, MA

A local business dedicated to bringing customers freshly caught fish straight from the ocean. We believe in supporting small local businesses through cooperative partnerships that allow us to share our products throughout the community.

## **Tamarack Hollow Trading**

[TamarackHollowNature&CulturalCenter](http://TamarackHollowNature&CulturalCenter)

[tamarackhollow.com](http://tamarackhollow.com) or

[tamarackhollownatureandculturalcenter.org](http://tamarackhollownatureandculturalcenter.org)

1515 & 1516 Savoy Hollow Rd.,

Windsor, MA 01270

413 522-1505

Highland boreal spruce-fir forest, naturalist-led hikes and treks, wild edibles, evergreen products, African and Caribbean drum classes.

**ADMISSIONS DIRECT MAIL**  
**BRANDING FUNDRAISING B2B**  
**ADVANCEMENT COLLATERAL RETAIL**  
**DISPLAYS MARKETING PROMO ITEMS**  
**DIRECT FULFILLMENT MERCHANDISING**



PRINT THAT WINS THE MOMENT

- Marketing Collateral
- Merchandising Tools
- Personalized Direct Mail
- Direct Fulfillment Programs
- Trade Show Displays
- Promotional Products



how will you

**WIN** THE MOMENT?

www.Qualprint.com | 3 Federico Drive · Pittsfield, MA 01201 | (413) 442-4166

# MODERN SINCE 1790

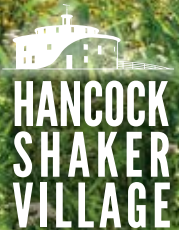
Innovation. Beauty. Simplicity.

**EXPLORE** twenty historic buildings  
and acres of heirloom gardens

**EXPERIENCE** art and design  
in a unique setting

**MEET** the farm animals

**HIKE** miles of trails

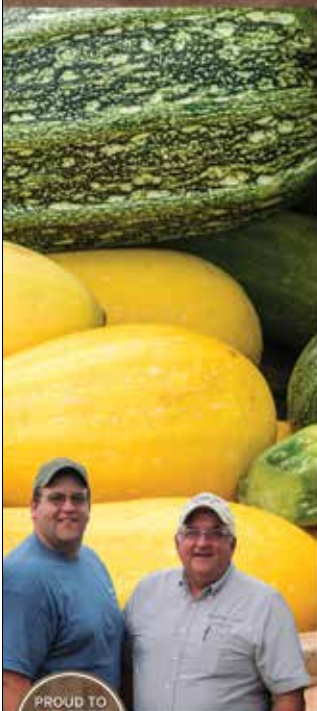


Pittsfield, MA For a full listing of activities, go to  
[HancockShakerVillage.org](http://HancockShakerVillage.org)

## Proud of Our Local Partners' Sustainable Practices

We work with our Local Partner, the Eckhardt family's Kinderhook Creek Farm in Stephentown, NY, to bring you the freshest zucchini, yellow squash and fall gourds and pumpkins. Working together locally sustains our communities and supports environmentally responsible business practices.

Matt & Larry Eckhardt  
 Father and Son



Scan to learn more about our local partnerships



## The Future of Food is Local

Berkshire Agricultural Ventures supports our region's greatest assets:  
**local farms & food businesses.**

Join us on our mission to build a thriving local food economy.

Visit us online to learn more:  
[berkshireagventures.org](http://berkshireagventures.org)

413.645.3594 | Great Barrington, MA  
 Berkshire Agricultural Ventures is a 501(c)(3) organization



# The Grass is Always Greener



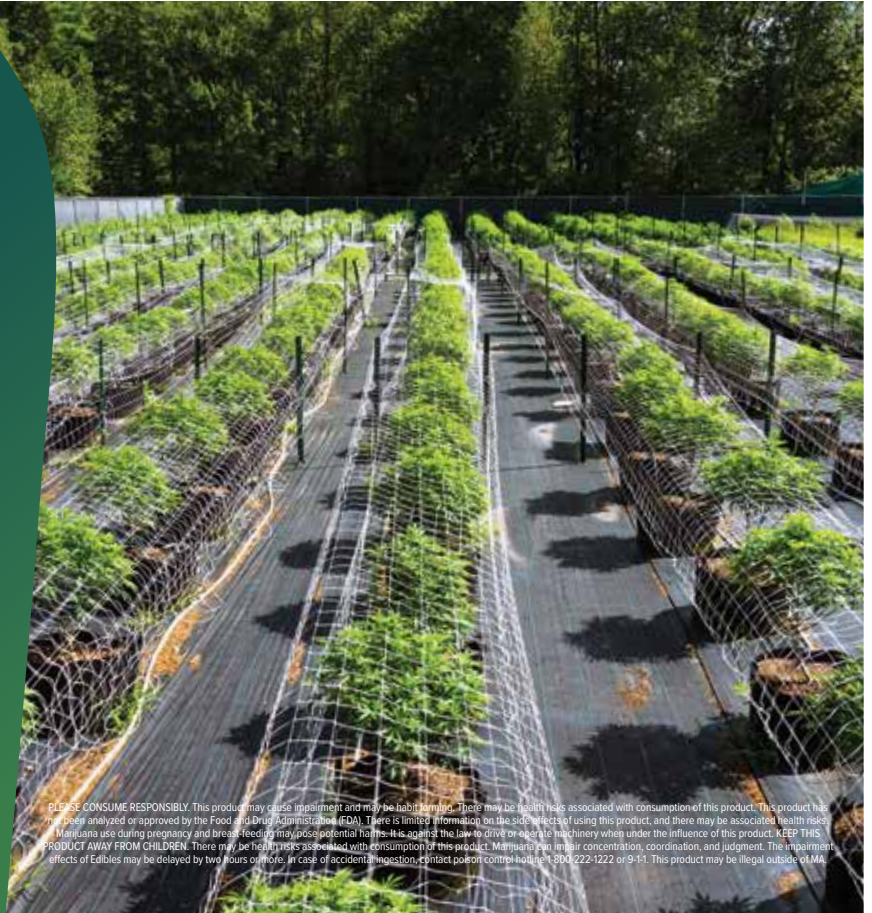
**THE PASS**  
BERKSHIRES

LOCALLY GROWN CANNABIS

**OPEN DAILY**  
1375 North Main Street  
Sheffield, MA



PLEASE CONSUME RESPONSIBLY. This product may cause impairment and may be habit forming. There may be health risks associated with consumption of this product. This product has not been analyzed or approved by the Food and Drug Administration (FDA). There is limited information on the side effects of using this product, and there may be associated health risks. Marijuana use during pregnancy and breastfeeding may pose potential harms. It is against the law to drive or operate machinery when under the influence of this product. KEEP THIS PRODUCT AWAY FROM CHILDREN. There may be health risks associated with consumption of this product. Marijuana has a high concentration, coordination, and judgment. The impairment effects of Edibles may be delayed by two hours or more. In case of accident, ingestion, contact poison control hotline 800-222-1222 or 9-1-1. This product may be illegal outside of MA.



**We are the Co-op Team** →

**Berkshire Food Co-op** was created by and for **families** in the Berkshires to bring **real food** to our **friends** and **neighbors**.

Everything we sell is **thoughtfully chosen** so you can rest assured it's **good for you** and for our **community**.

**Berkshire Food Co-op**

www.berkshire.coop  
(413) 528-9697  
34 Bridge Street,  
Great Barrington, MA

@berkshirecoop

## The Old Inn On The Green

Fine Dining • Lodging • Catering

**tripadvisor**

134 Hartsville  
New Marlborough Road,  
New Marlborough, MA  
413-229-7924  
oldinn.com

### Special Event Catering in the Berkshires

*The Old Inn is a full service catering and special event design company that specializes in unique, elegant and creative events.*

## The Southfield Store

**Café and Bakery**

Mon-Sat 7am - 4pm, Sunday 8am - 4pm  
Sunday brunch 8am - 2:30pm  
163 Norfolk Road, Southfield, MA 01259  
413-229-5050



**Never  
Miss a  
Bite!**



SUBSCRIBE at  
[EdibleBerkshires.com](http://EdibleBerkshires.com)

# the BERKSHIRES FARM TABLE COOKBOOK

125 Home-Grown Recipes  
from the New England Hills

READABLE  
FEAST'S  
NEW ENGLAND  
COOKBOOK  
OF THE YEAR!

ELISA SPUNGEN BILDNER  
& ROBERT BILDNER  
with CHEF BRIAN ALBERG

[www.berkshiresandbeyond.com](http://www.berkshiresandbeyond.com)



**WINDY HILL FARM**  
NURSERY • ORCHARD • GARDEN SHOP

## FROM OUR FIELDS

**FRESH-PICKED AND PICK-YOUR-OWN**

**BLUEBERRIES IN JULY AND AUGUST**

**APPLES IN SEPTEMBER AND OCTOBER**

**OUR UNPASTEURIZED SWEET CIDER BLEND  
SEPTEMBER THRU DECEMBER**

**GARLIC BULBS IN AUGUST AND SEPTEMBER**

**FRESH-CUT WINTERBERRY BRANCHES IN  
NOVEMBER AND DECEMBER**

**OPEN DAILY 9-5**



686 STOCKBRIDGE ROAD  
GREAT BARRINGTON, MA 01230  
[WWW.WINDYHILLFARMINC.COM](http://WWW.WINDYHILLFARMINC.COM)  
(413) 298-3217



**Everyone  
can shop**



**Anyone  
can join**



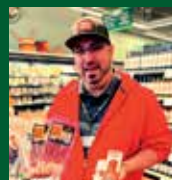
**Specialty  
Beer & Wine**



**5 Consecutive  
Years**



**Low Cost  
Co-op Basics**



**Local  
Meat, Fish, Cheese**



**Allergy Friendly  
Items**



**Cafe &  
Grab-n-Go**

**Shop the Co-op | Eat in the Café | Join & Save**

*You're  
Invited*

To our cooperatively owned, local, organic,  
sustainable, specialty & bulk item grocery store  
with healthy low cost choices & fresh goodness  
from prepared food departments that's serviced  
our community for 40+ years.



Wild Oats Market, 320 Main St, Williamstown, MA 01267

(413) 458-8060 | [wildoats.coop](http://wildoats.coop)





*Berkshire Grown Feeds:*  
**YOUR BODY**  
**YOUR BELLY**  
**YOUR MIND**  
**YOUR SOUL**  
**YOUR HAPPINESS**  
**YOUR SOCIAL APPETITE**



*Support the organization, staff and members. Check out all the fine folks in this guide and help continue their work.*

*Rolling Rock Farm SHEFFIELD MA*

**Youth • Environment • Community**



A participant at the 1st Annual Women in Conservation & Agriculture Conference learns tree climbing skills.

**AH**

ASHFORD HEIGHTS FARM

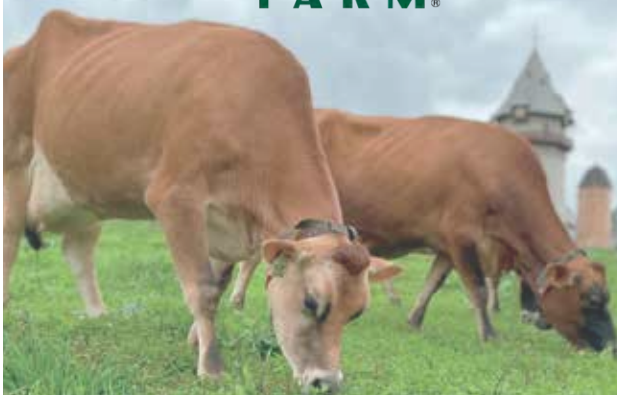
**Registered Leicester Longwool and Gotland Sheep**

Grass fed lamb, Fiber Products, Breeding & Fiber Animals

[www.ashfordheightsfarm.com](http://www.ashfordheightsfarm.com)



**High Lawn FARM**



*Celebrating 100-years of Pure Jersey Milk!*

**Farmstead Creamery - Open Daily!**



FOLLOW US ON SOCIAL MEDIA!

[@HIGHLAWNFARM](https://www.instagram.com/highlawnfarm)

[WWW.HIGHLAWNFARM.COM](http://WWW.HIGHLAWNFARM.COM)

**CELEBRATING LOCAL FARMS & FOOD CRAFTERS!**



**GUIDO'S FRESH**  
MARKETPLACE  
foraging for you

Shop our locally owned Family of Businesses:

**BELLA FLORA**  
**MAZZEO'S MEAT & SEAFOOD**  
**THE CHEF'S SHOP**

LOCATED ALONG RTE 7 PITTSFIELD & GB  
[@GUIDOSFRESHMARKETPLACE](https://www.instagram.com/guidosfreshmarketplace)



# The True Price of Local Food

**W**hat is the full value of local food? In the Berkshires, locally-grown food is a key ingredient in our region's rural character. Local food is fresh, varied, and nutritious, and purchasing it directly from the farmer offers community members an opportunity to connect their food with the people who produce it. Local food, however, often comes with a higher price tag.

The effects of shopping locally – at the farmers market, at a restaurant or grocery store that sources locally, or through a Community Supported Agriculture share – go beyond a simple transaction. Food that's grown in season and harvested at its peak has been shown to retain higher nutrient levels. Beyond personal health, spending your food dollars locally is a long-term investment in the local foodshed: the farmland, the ecosystems, your community. The charm of a rural landscape can only exist as long as farmers can continue stewarding the land. Regularly supporting local farmers allows them to build viable farm businesses, weather the ups and downs of farming, and continue to choose farming practices based on more than just their bottom line.

The Massachusetts Food System Collaborative points out that "the retail price of food belies its cost. The pursuit of inexpensive food has led to conditions that threaten farm sustainability, exploit natural resources and make it more difficult for many to access nutritious food." Food costs are based on a complex set of factors. Every farm is unique, and each farmer has to charge prices that cover their cost of production and keep their business viable. Some farmers' costs are beyond their control, like rising feed and fuel prices

or the cost of farmland in their area--land access is limited in the Berkshires and good farmland is expensive. Prices from local farms can be higher because smaller farms cannot take advantage of economies of scale, and farm practices that preserve soil health and support animal welfare, like reduced tillage or pasture rotation, can cost more in labor and soil inputs. Other costs are more variable: how much to pay workers, whether to use organic or conventional growing methods, or choosing sustainable management practices at the expense of higher crop yields. With all of these variables, prices for the same product may differ even within the local food economy.

But local food prices aren't always higher – depending on the specific product and season, you can sometimes get more for your money at the farmers market than at the grocery store. A 2018 report from the Massachusetts Food System Collaborative found that for fresh fruits and vegetables in-season, farmers market prices were generally lower than those at grocery stores. And there are ways to reduce costs when local food does have a higher price point. Joining a CSA, purchasing meat in bulk, or visiting pick-your-own farms can lower the price of certain local products.

A sustainable regional economy is one in which people can access as much local food as possible, farmers produce a variety of foods, and a healthy connection between farmers and consumers keeps the local foodshed thriving. To keep farmers farming, it's critical to recognize the full value of the local food they produce and happily pay prices that reflect their costs.



**SCAN TO SUPPORT  
LOCAL FARMERS!**

*Many Forks Farm, Clarksburg, MA*



Proud to invest in the local community  
by supporting local farmers





PO Box 983  
Great Barrington MA 01230

support local food + farms

# *Guide to* **Local Food & Farms**



## **Become a Member of Berkshire Grown**

**Berkshire Grown's mission is simple – Keep Farmers Farming!**

Membership supports our local farmers, helps feed our community, and builds the local food economy while preserving the Berkshires' rural character.

To contact us, email [buylocal@berkshiregrown.org](mailto:buylocal@berkshiregrown.org) or call 413 528-0041

**LEARN MORE** [BerkshireGrown.org/Support](https://BerkshireGrown.org/Support)

**FOLLOW US**  [@berkshiregrown](https://www.facebook.com/berkshiregrown)  
 [@berkgrown](https://www.instagram.com/berkgrown)



support local food + farms